

# OV12/OV16

FROM 1 to 2



# DV12/DV16

From 1 to 2

Slat diverter

## Main features

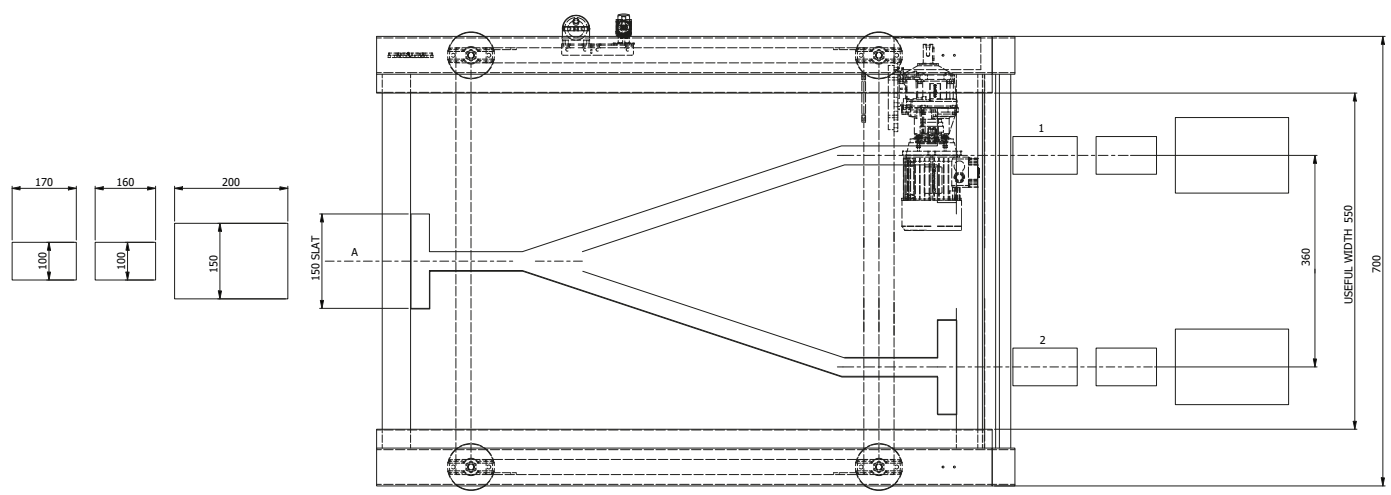
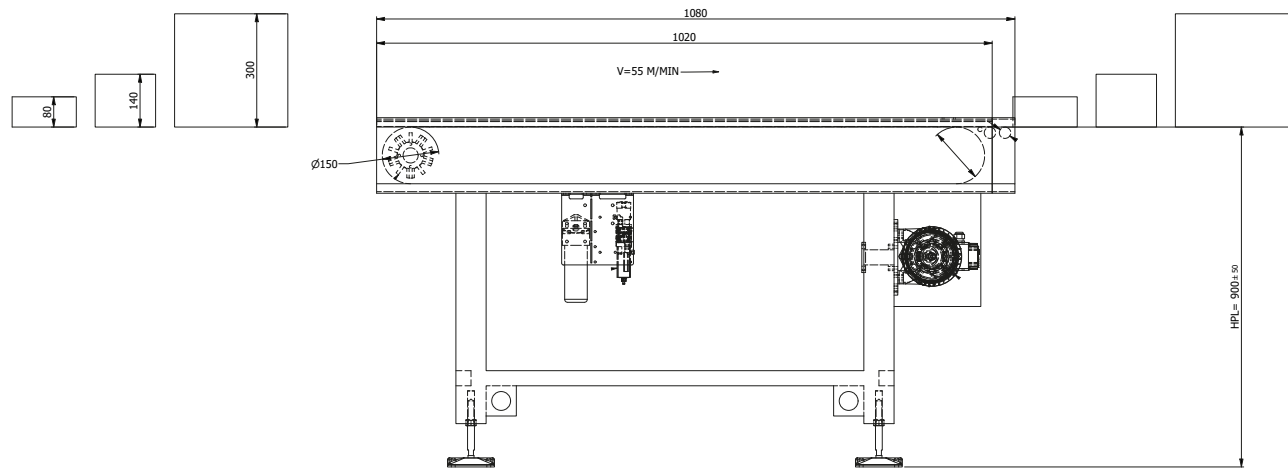
- Diverter/Aligner 1/2.
- AC motor controlled by inverter, speed up to 50 m/min.
- Working temperature: from 0 °C to + 40 °C.
- Power supply: 230 Vac (Hz 50/60).
- Maximum power: 1.50 kW.
- Structure and carpentry in aluminum and steel.
- Belt height from the ground: 850 +/- 50 mm.
- Machine management by PLC.

## Possible applications

- Selection of output lines based on signals from checkweighers, metal detectors, barcode readers, vision systems.
- Balancing of the production flow on the downstream machines.
- Connection between production machines of different capacities.

## Options

- Incoming cadance belts.
- Centralized adjustment of the distance between the rows (manual or automatic).



# OV12/OV16

FROM 1 to 2

**MODULAR AND INTEGRABLE**

**REDUCED MAINTENANCE COSTS**

**SELF-DIAGNOSTIC**

**CONNECTIVITY AND DATA SHARING WITH OTHER SOFTWARE**

**REMOTE ASSISTANCE**



 TECHNOLOGY for Your Business

R.S. Balance S.r.l.  
Via Rinaudo, 19, Valcorrente - 95032 Belpasso CT  
Tel. +39 095 352328a3  
[commerciale@rsbalance.com](mailto:commerciale@rsbalance.com)  
[www.rsbalance.com](http://www.rsbalance.com)

