

Label server



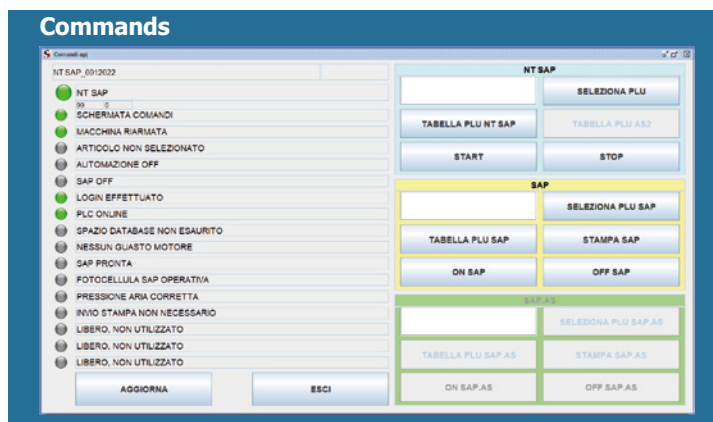
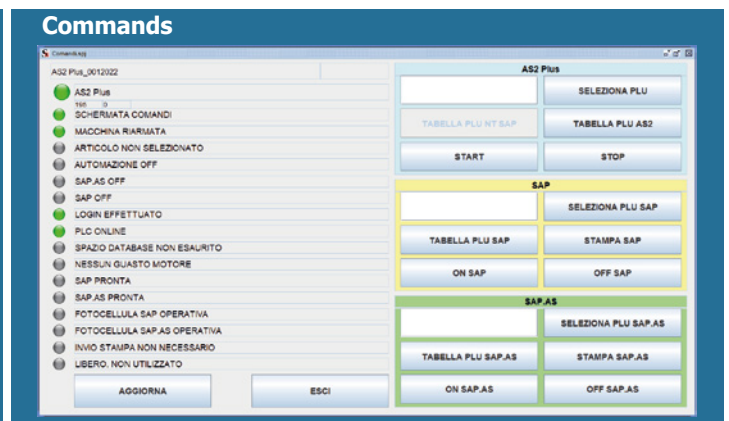
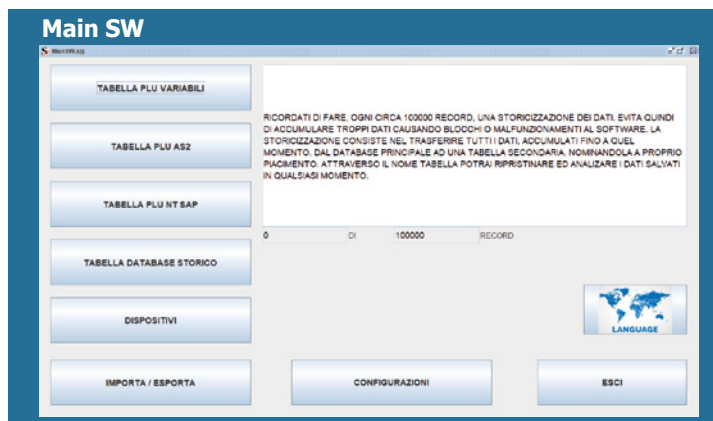
Main functions

- Management of PLU table with product settings (code, description, speed, delays, etc. ..);
- Variable table management with the information to be printed (code, description, label and associated variable information);
- Receives and groups the information to be saved of the labels printed by all the machines connected to it;
- RS Bilance standard file sharing system;
- Standard RS Bilance communication protocol (remote commands for PLU selection, Variable selection, machine start and stop, printers on and off, machine status request, etc.);
- Connectable to AS2 Plus and NT SAP labeling machines.

Software

Minimum PC requirements

- Intel® Core™ i3 - 8 GB RAM.
- 1 GB of free disk space.
- 64-bit operating system Windows 7 or higher version.
- Monitor with minimum resolution 800x600.
- Internet access.



Labelserver

MODULAR AND INTEGRABLE

REDUCED MAINTENANCE COSTS

SELF-DIAGNOSTIC

CONNECTIVITY AND DATA SHARING WITH OTHER SOFTWARE

REMOTE ASSISTANCE



 TECHNOLOGY for Your Business

R.S. Bilance S.r.l.

Via Rinaudo, 19, Valcorrente - 95032 Belpasso CT

Tel. +39 095 3523283

commerciale@rsbilance.com

www.rsbilance.com

