



  TECHNOLOGY for Your Business



DESIGN • PRODUCTION • SALES

our business for your business

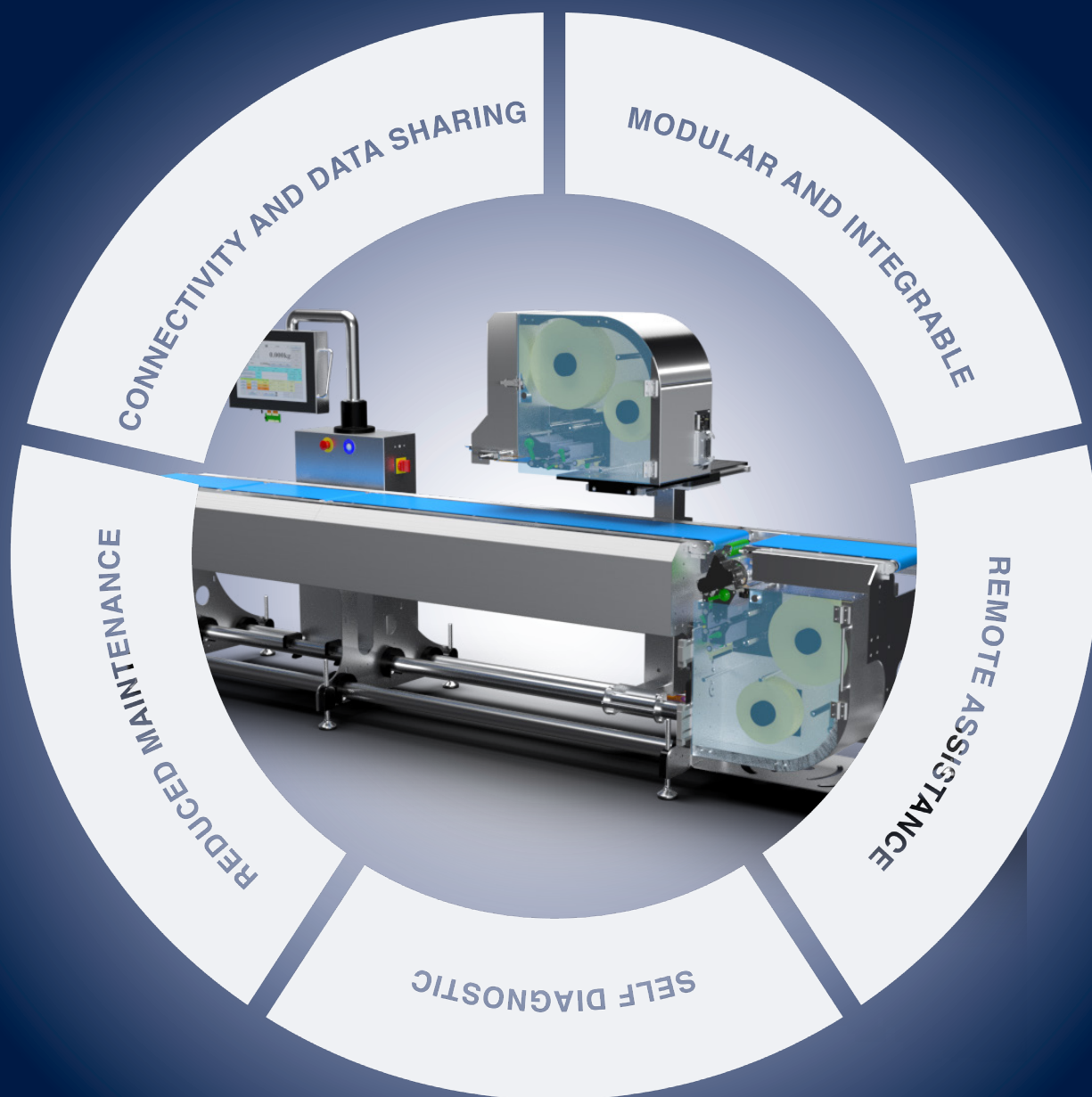


WEIGHING SYSTEMS
WEIGH PRICE LABELERS
CHECKWEIGHERS
AUTOMATIC LABELING MACHINES
WEIGHT INDICATORS
WEIGHING MODULES
MANUAL LABELERS
METAL DETECTORS
VISION SYSTEMS
CONVEYORS BELTS
CONVEYORS CURVES
DIVERTERS
ALIGNERS
ROTATORS
SOFTWARE
CONSUMABLES

ABOUT US

High industrial technology and maximum versatility

With consolidated experience behind us, our company creates capital goods for the agri-food, large-scale retail trade and industry sectors and trade that require weighing, dosing, packaging, storage etc. Our reference markets are mainly Europe, Central and South America and North Africa. RS Bilance was founded in 2006, after long experience in the field. The quality of our systems and reliability in after-sales allow us to enjoy a good reputation both on the national market and abroad, where we are rapidly expanding. The company is particularly specialized in the sector of automation, in the design and production of systems weighing machines, automatic pricing machines, sorting machines weighing machines, automatic labelers, vision control systems, metal detector, software for control and data management. The range of RS Bilance systems ranges from automatic scales and manual, to pricing machines, labeling machines, through systems vision, metal detectors, aligners and related software. Furthermore, the company designs dedicated key processing lines in hand and, where there are pre-existing systems, it is capable of adapting them to the most advanced standards and also intervenes at the points of sale with software for the controlled management of processes of transit of products, from arrival to sale. Great care, as it is mentioned, is placed on the assistance and maintenance of the systems, ranging from interventions under warranty to scheduled ones. The methods of projection on the market for the products present in the catalog explain that Rapisarda are mainly characterized by the use of commercial agents with adequate skills in technical-industrial sectors, and operating in the product sector of the potential customer to conduct effective negotiations; automation system resellers; facilitators, influencers and technical commercial partners for tailor-made orders. RS Bilance was created to trigger a process of innovation of processing lines and machines to accompany fruit and vegetables, aimed at improving performance. The ever-present need for new and advanced processes has placed us ever higher goals that have allowed us to achieve leadership in the sector. The engineering process of our company concerns every aspect of the business on a daily basis: production in both the mechatronics and IT parts, without ever neglecting the aspect of continuous training of our people experts. The usefulness of this process is intended, among others, for the sector of agri-food that interfaces daily with the current one: industrial revolution defined as Industry 4.0, for which cyber-physical systems have been developed, that is, physical systems that are closely connected with IT systems and which can interact and collaborate with other cyber-physical systems, in the same way of agriculture 4.0, therefore advanced and latest generation.



MID CERTIFICATION (annex MI-006)
AUTOMATIC WEIGHING INSTRUMENTS

NAWI CERTIFICATION
NON-AUTOMATIC WEIGHING INSTRUMENTS





WEIGH PRICE LABELERS

GWX PLUS 20P

PRODUCT DESCRIPTION

Wweigh price labeler.

Variable weight and/or predetermined weight labeling with statistical control that is fully configurable and can be integrated into external software.

Approved (MID)



MAIN FEATURES

- Cadences up to 20 ppm (stop and go operation)
- Capacity: 6 kg - 2 g with motorized belts 270 and 315 mm width
- 1 closed loop motorized belt
- Brushless motor and drive board, speed up to 40 m/min
- Working temperature: from 0°C to +40°C
- Power supply: 230 Vac (Hz 50/60)
- Maximum power: 0.85 kW
- 12" resistive PC/Panel display, suitable for use with gloves and in the presence of water/condensation
- Structure and carpentry in aluminum and stainless steel
- Height of belt from the ground: 850 +/- 50 mm
- Machine management via PLC
- Printing method: thermal and/or direct transfer
- Resolution: 8 dots/mm, 203 dpi (optional: 12 dots/mm, 300 dpi)
- Print speed: 203 dpi, 457 mm/s - 300 dpi, 300 mm/s
- Label dimensions: from 40x40 to 100 mm x 110 mm
- Print width: 100 mm
- Internal roll diameter: 76 mm
- External roll diameter: 300 mm
- Ribbon capacity of 600 meters
- Compressed air label application (AIR BLAST), 6 bar 60 l/min, multi-label firing chamber with mechanical adjustment and position indicator

GWX PLUS 25P

PRODUCT DESCRIPTION

Wheigh price labeler for pre-packaged products. Variable weight and/or predetermined weight labeling with statistical control that is fully configurable and can be integrated into external software.

Approved (MID)



MAIN FEATURES

- Cadences up to 25 ppm (stop and go operation)
- Capacity: 3 kg - 1g / 6 kg - 2 g with motorized belts width 225
- Capacity: 6 kg - 2 g with motorized belts 225, 270 and 315 mm width
- 2 motorized closed loop belts
- Brushless motor and drive board, speed up to 40 m/min
- Working temperature: from 0°C to +40°C
- Power supply: 230 Vac (Hz 50/60)
- Maximum power: 0.85 kW
- 12" resistive PC/Panel display, suitable for use with gloves and in the presence of water/condensation
- Structure and carpentry in aluminum and stainless steel
- Height of belt from the ground: 850 +/- 50 mm
- Machine management via PLC
- Printing method: thermal and/or direct transfer
- Resolution: 8 dots/mm, 203 dpi (optional: 12 dots/mm, 300 dpi)
- Print speed: 203 dpi, 457 mm/s - 300 dpi, 300 mm/s
- Label dimensions: from 40x40 to 100 mm x 110 mm
- Print width: 104 mm
- Internal roll diameter: 76 mm
- External roll diameter: 300 mm
- Ribbon capacity of 600 meters
- Compressed air label application (AIR BLAST), 6 bar 60 l/min, multi-label firing chamber with mechanical adjustment and position indicator
- Label application via rotary pneumatic arm with sponge application plate, consumption 4/6 bar 40 l/min
- Horizontal, vertical and rotational (180°) printing group mechanism movement

GWX PLUS 45P

PRODUCT DESCRIPTION

Weight price labeler for pre-packaged products. Variable weight and/or predetermined weight labeling with statistical control that is fully configurable and can be integrated into external software.

Approved (MID)



MAIN FEATURES

- Cadences up to 45 ppm (stop and go operation)
- Capacity: 3 kg - 1g / 6 kg - 2 g with motorized belts 225 mm width
- Capacity: 6 kg - 2 g with motorized belts 225, 270 and 315 mm width
- 2 motorized closed loop belts
- Brushless motor and drive board, speed up to 55 m/min
- Working temperature: from 0°C to +40°C
- Power supply: 230 Vac (Hz 50/60)
- Maximum power: 1.15 kW
- 12" resistive PC/Panel display, suitable for use with gloves and in the presence of water/condensation
- Structure and carpentry in aluminum and stainless steel
- Height of belt from the ground: 850 +/- 50 mm
- Machine management via PLC
- Printing method: thermal and/or direct transfer
- Resolution: 8 dots/mm, 203 dpi (optional: 12 dots/mm, 300 dpi)
- Print speed: 203 dpi, 457 mm/s - 300 dpi, 300 mm/s
- Label dimensions: from 40x40 to 100 mm x 110 mm
- Print width: 104 mm
- Internal roll diameter: 76 mm
- External roll diameter: 300 mm
- Ribbon capacity of 600 meters
- Compressed air label application (AIR BLAST), 6 bar 60 l/min, multi-label firing chamber with mechanical adjustment and position indicator
- Label application via rotary pneumatic arm with sponge application plate, consumption 4/6 bar 40 l/min

GWX PLUS 60P

PRODUCT DESCRIPTION

Wheigh price labeler for pre-packaged products. Variable weight and/or predetermined weight labeling with statistical control that is fully configurable and can be integrated into external software.

Approved (MID)



MAIN FEATURES

- Cadences up to 60 ppm (dynamic operation)
- Capacity: 3 kg - 1g / 6 kg - 2 g with motorized belts 225 mm width
- Capacity: 6 kg - 2 g with motorized belts 215, 270 and 315 mm width
- 3 motorized closed loop belts
- Brushless motor and drive board, speed up to 40 m/min
- Working temperature: from 0°C to +40°C
- Power supply: 230 Vac (Hz 50/60)
- Maximum power: 1.15 kW
- 12" resistive PC/Panel display, suitable for use with gloves and in the presence of water/condensation
- Structure and carpentry in aluminum and stainless steel
- Height of belt from the ground: 850 +/- 50 mm
- Machine management via PLC
- Printing method: thermal and/or direct transfer
- Resolution: 8 dots/mm, 203 dpi (optional: 12 dots/mm, 300 dpi)
- Print speed: 203 dpi, 457 mm/s - 300 dpi, 300 mm/s
- Label dimensions: from 40x40 to 100 mm x 110 mm
- Print width: 104 mm
- Internal roll diameter: 76 mm
- External roll diameter: 300 mm
- Ribbon capacity of 600 meters
- Compressed air label application (AIR BLAST), 6 bar 60 l/min, multi-label firing chamber with mechanical adjustment and position indicator
- Label application via rotary pneumatic arm with sponge application plate, consumption 4/6 bar 40 l/min
- Mechanical movement of the horizontal, vertical and rotation group (180°)

GWX AS2 PLUS

PRODUCT DESCRIPTION

Weight price labeler with label application from below.
Variable weight and/or predetermined weight labeling with statistical control that is fully configurable and can be integrated into external software.
Approved (MID)



MAIN FEATURES

- Cadences up to 60 ppm
- Capacity: 3 kg - 1 g / 6 kg - 2 g with motorized belts 230 mm width
- Capacity: 6 kg - 2 g with motorized belts 230, 275, 320 mm width
- 4 motorized closed loop belts
- Brushless motor and drive boards, speed up to 40 m/min
- Working temperature: from 0°C to +40°C
- Power supply: 230 Vac (Hz 50/60)
- Maximum power: 1.45 kW
- 12" resistive PC/Panel display, suitable for use with gloves and in the presence of water/condensation
- Structure and carpentry in aluminum and stainless steel
- Height of belt from the ground: 850 +/- 50 mm
- Machine management via PLC
- Printing method: thermal and/or direct transfer
- Resolution: 8 dots/mm, 203 dpi (optional: 12 dots/mm, 300 dpi)
- Print speed: 203 dpi, 457 mm/s - 300 dpi, 300 mm/s
- Label dimensions: from 40x40 to 110 mm x 110 mm
- Print width: 104 mm
- Internal roll diameter: 76 mm
- External roll diameter: 300 mm
- Ribbon capacity of 600 meters
- Label application with electronic motorized belt
- Air consumption: 6 bar 60 l/min
- Linear movement on bearings for print head positioning

GWX MAXI PLUS 30P

PRODUCT DESCRIPTION

Weight price labeler for cases.
Variable weight and/or
predetermined weight labeling
with statistical control that is
fully configurable and can be
integrated into external software.
Approved (MID)



MAIN FEATURES

- Cadences up to 30 ppm (stop and go operation)
- Capacity: 15 kg - 5 g / 30 kg - 10 g / 60 kg - 20 g with motorized belts 420 and 510 mm width
- 2 motorized closed loop belts
- Brushless motors and drive boards, speeds up to 40 m/min
- Working temperature: from 0°C to +40°C
- Power supply: 230 Vac (Hz 50/60)
- Maximum power: 1.85 kW
- 12" resistive PC/Panel display, suitable for use with gloves and in the presence of water/condensation
- Structure and carpentry in aluminum and stainless steel
- Height of belt from the ground: 850 +/- 50 mm
- Machine management via PLC
- Printing method: thermal and/or direct transfer
- Resolution: 8 dots/mm, 203 dpi (optional: 12 dots/mm, 300 dpi)
- Print speed: 203 dpi, 457 mm/s - 300 dpi, 300 mm/s
- Label dimensions: from 40x40 to 100 mm x 110 mm
- Print width: 104 mm
- Internal roll diameter: 76 mm
- External roll diameter: 300 mm
- Ribbon capacity of 600 meters
- Compressed air label application (AIR BLAST), 6 bar 60 l/min, multi-label firing chamber with mechanical adjustment and position indicator
- Label application with rotary mechanical arm stick with sponge application plate
- Air consumption: 4/6 bar 40 l/min
- Mechanical movement of the horizontal, vertical and rotation printing group (180°)

GWX 270V PLUS

PRODUCT DESCRIPTION

Wheigh price labeler for unpackaged or small spherical products.
Variable weight and/or predetermined weight labeling with statistical control that is fully configurable and can be integrated into external software.
Approved (MID)



MAIN FEATURES

- Cadences up to 60 ppm
- Capacity: 6 kg - 2 g / 15 kg - 5 g with motorized belts 270 mm width
- 6 closed loop motorized belts
- Brushless motors and drive board, speeds up to 40 m/min
- Working temperature: from 0°C to +40°C
- Power supply: 230 Vac (Hz 50/60)
- Maximum power: 1.15 kW
- 12" resistive PC/Panel display, suitable for use with gloves and in the presence of water/condensation
- Structure and carpentry in aluminum and stainless steel
- Height of belt from the ground: 700 +/- 50 mm
- Machine management via PLC
- Printing method: thermal and/or direct transfer
- Resolution: 8 dots/mm, 203 dpi (optional: 12 dots/mm, 300 dpi)
- Print speed: 203 dpi, 457 mm/s - 300 dpi, 300 mm/s
- Label dimensions: from 40x40 to 100 mm x 110 mm
- Print width: 104 mm
- Internal roll diameter: 76 mm
- External roll diameter: 300 mm
- Ribbon capacity of 600 meters
- Compressed air label application (AIR BLAST), 6 bar 60 l/min, multi-label firing chamber with mechanical adjustment and position indicator
- Label application with rotary mechanical arm stick with sponge application plate
- Air consumption: 4/6 bar 40 l/min
- Mechanical movement of the horizontal, vertical and rotation printing group (180°)

GWX 380V PLUS

PRODUCT DESCRIPTION

Wheigh price labeler for unpackaged or spherical products.
Variable weight and/or predetermined weight labeling with statistical control that is fully configurable and can be integrated into external software.

Approved (MID)



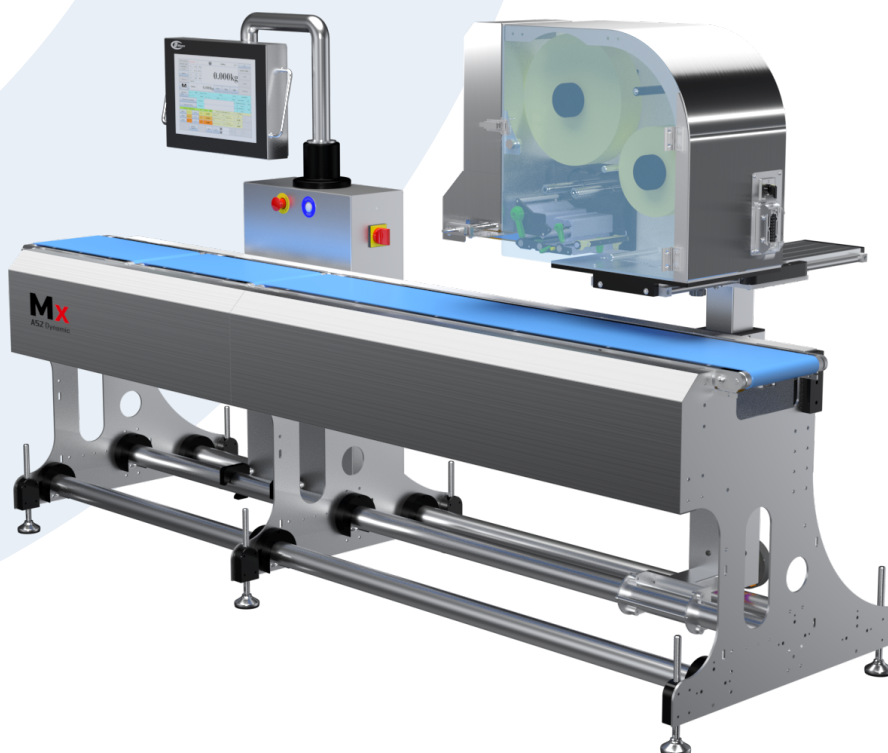
MAIN FEATURES

- Cadences up to 35 ppm
- Capacity: 15 kg - 5 g / 30 kg - 10 g with motorized belts 380 mm width
- 6 closed loop motorized belts
- Brushless motors and drive boards, speeds up to 40 m/min
- Working temperature: from 0°C to +40°C
- Power supply: 230 Vac (Hz 50/60)
- Maximum power: 3.05 kW
- 12" resistive PC/Panel display, suitable for use with gloves and in the presence of water/condensation
- Structure and carpentry in aluminum and stainless steel
- Height of belt from the ground: 850 +/- 50 mm
- Machine management via PLC
- Printing method: thermal and/or direct transfer
- Resolution: 8 dots/mm, 203 dpi (optional: 12 dots/mm, 300 dpi)
- Print speed: 203 dpi, 457 mm/s - 300 dpi, 300 mm/s
- Label dimensions: from 40x40 to 100 mm x 110 mm
- Print width: 104 mm
- Internal roll diameter: 76 mm
- External roll diameter: 300 mm
- Ribbon capacity of 600 meters
- Compressed air label application (AIR BLAST), 6 bar 60 l/min, multi-label firing chamber with mechanical adjustment and position indicator
- Label application with rotary mechanical arm stick with sponge application plate
- Air consumption: 4/6 bar 40 l/min
- Mechanical movement of the horizontal, vertical and rotation printing group (180°)

MX DYNAMIC

PRODUCT DESCRIPTION

Fully configurable high speed weight price labeler.
Variable weight and/or predetermined weight labeling with statistical control that is fully configurable and can be integrated into external software.
Approved (MID)



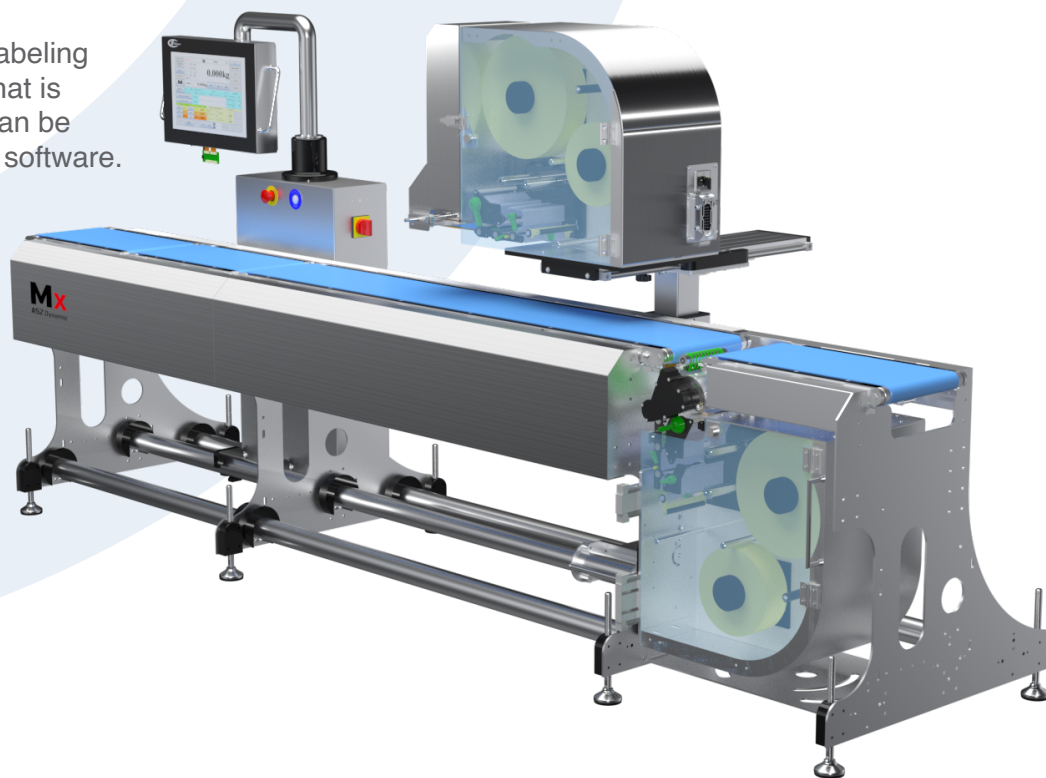
MAIN FEATURES

- Cadences up to 100 ppm
- Capacity: 3 kg - 1 g / 6 kg - 2 g with motorized belts 225 mm width
- Capacity: 6 kg - 2 g with motorized belts 225, 270, 315 mm width
- From 3 to 4 motorized closed loop belts
- Brushless motors and drive boards, speeds up to 70 m/min
- Working temperature: from 0°C to +40°C
- Power supply: 230 Vac (Hz 50/60)
- Maximum power: 3 belts 1.15 kW
- 18,5" resistive PC/Panel display, suitable for use with gloves and in the presence of water/condensation
- Structure and carpentry in aluminum and stainless steel
- Height of belt from the ground: 850 +/- 50 mm
- Machine management via PLC
- LED light column for out of tolerance and alarms
- Printing method: thermal and/or direct transfer
- Resolution: 8 dots/mm, 203 dpi (optional: 12 dots/mm, 300 dpi)
- Print speed: 203 dpi, 457 mm/s - 300 dpi, 300 mm/s
- Label dimensions: from 40x40 to 100 mm x 110 mm
- Print width: 104 mm
- Internal roll diameter: 76 mm
- External roll diameter: 300 mm
- Belt capacity of 600 meters
- Compressed air label application (AIR BLAST), 6 bar 60 l/min, multi-label chamber with mechanical adjustment and position indicator
- Label application with rotary mechanical arm with sponge application plate
- Air consumption: 4/6 bar 40 l/min
- Mechanical movement of the horizontal, vertical and rotation printing group (180°)

MX AS2 DYNAMIC

PRODUCT DESCRIPTION

Fully configurable high speed
weigh price labeler.
Variable weight and/or
predetermined weight labeling
with statistical control that is
fully configurable and can be
integrated into external software.
Approved (MID)



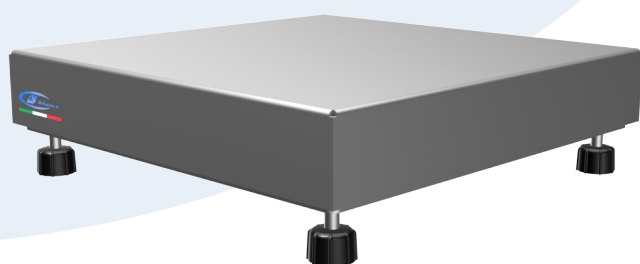
MAIN FEATURES

- Cadences up to 100 ppm
- Capacity: 3 kg - 1 g / 6 kg - 2 g with motorized belts 225 mm width
- Capacity: 6 kg - 2 g with motorized belts 225, 270, 315 mm width
- From 3 to 4 motorized closed loop belts
- Brushless motors and drive cards, speeds up to 70 m/min
- Working temperature: from 0°C to +40°C
- Power supply: 230 Vac (Hz 50/60)
- Maximum power: 3 belts 1.15 kW
- 18,5" resistive PC/Panel display, suitable for use with gloves and in the presence of water/condensation
- Structure and carpentry in aluminum and stainless steel
- Height of belt from the ground: 850 +/- 50 mm
- Machine management via PLC
- Printing method: thermal and/or direct transfer
- Resolution: 8 dots/mm, 203 dpi (optional: 12 dots/mm, 300 dpi)
- Print speed: 203 dpi, 457 mm/s - 300 dpi, 300 mm/s
- Label dimensions: from 40x40 to 100 mm x 110 mm
- Print width: 104 mm
- Internal roll diameter: 76 mm
- External roll diameter: 300 mm
- Ribbon capacity of 600 meters
- Compressed air label application (AIR BLAST), 6 bar 60 l/min, multi-label chamber with mechanical adjustment and position indicator
- Air consumption: 4/6 bar 40 l/min
- Mechanical movement of the horizontal, vertical and rotation printing group (180°)

SPM 12

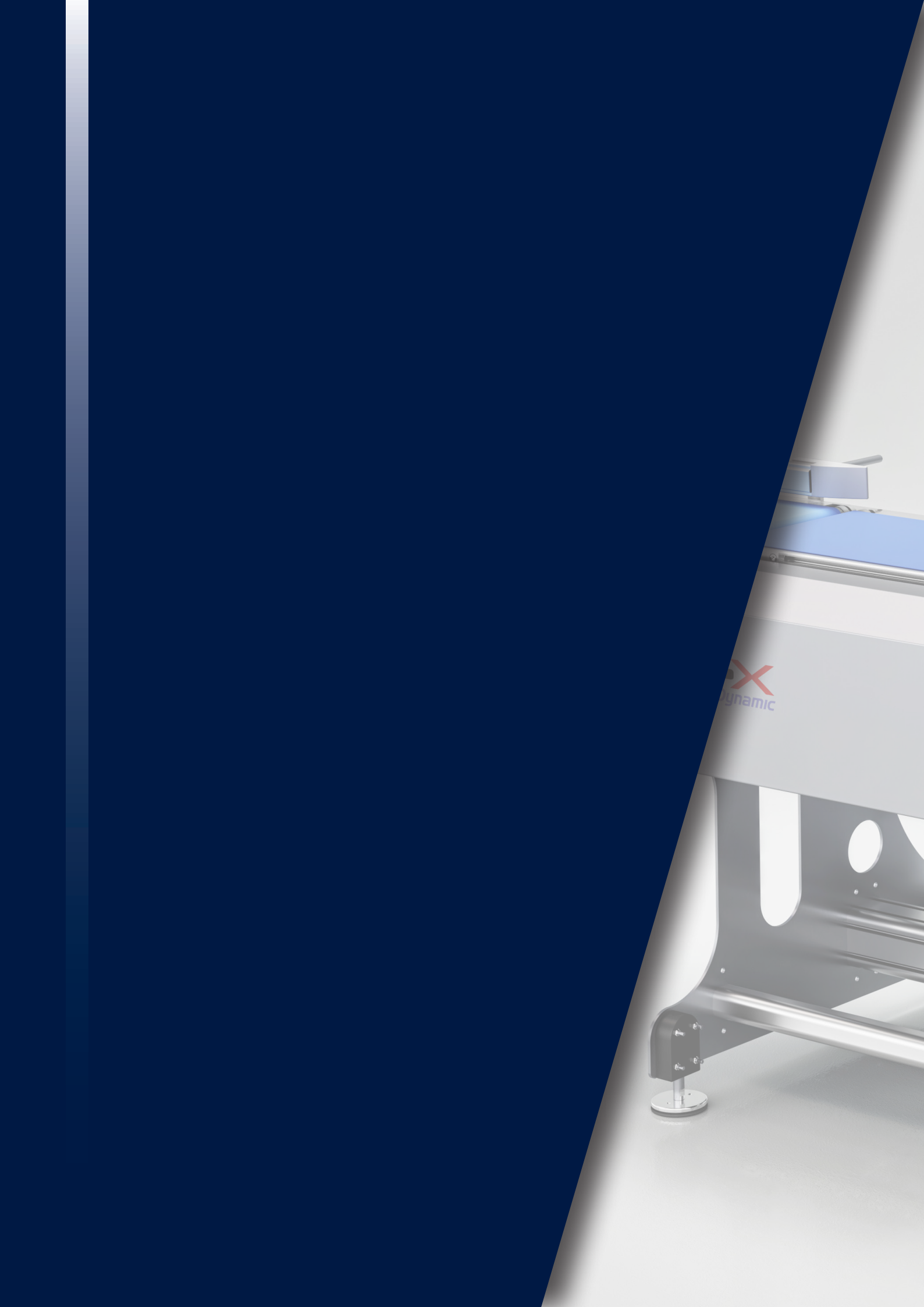
PRODUCT DESCRIPTION

Manual weighing and pricing station.



MAIN FEATURES

- 12" resistive PC/Panel display, suitable for use with gloves and in the presence of water/condensation
- Stainless steel structure
- Working temperature: from 0°C to +40°C
- Power supply: 230 Vac (Hz 50/60)
- Maximum power: from 15.6 W
- Stainless steel platform, operation with approved "single point" load cell in stainless steel, according to OIML R60 standards with protection from dust and humidity and according to IP67 standards
- SD Plus printer
- Printing method: thermal and/or direct transfer



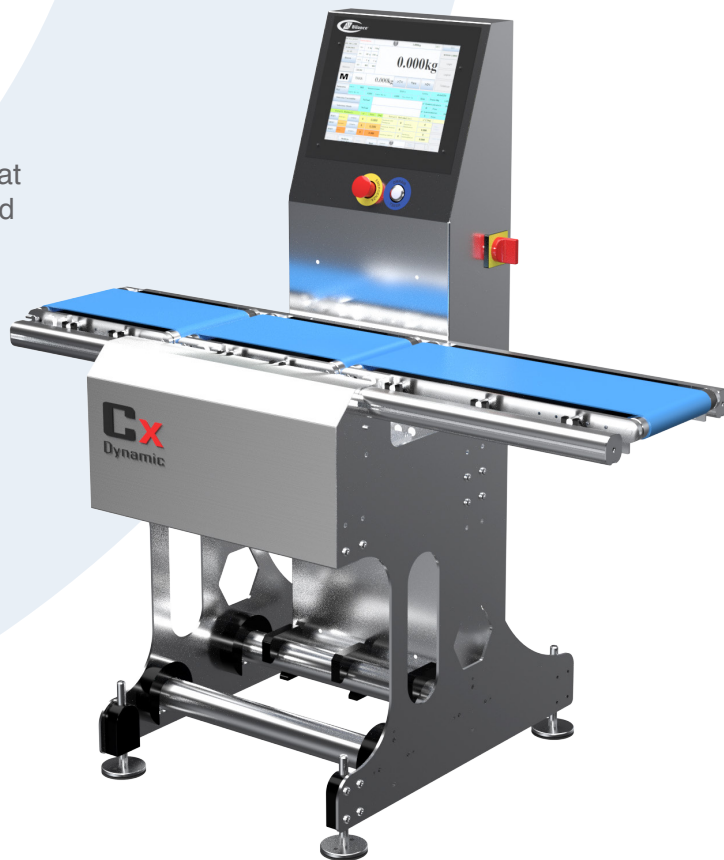


CHECKWEIGHERS

CX DYNAMIC

PRODUCT DESCRIPTION

Checkweigher for small capacities.
It allows you to control predetermined weight products with statistical control that is fully configurable and can be integrated with external software.
Approved (MID)



MAIN FEATURES

- Cadences up to 170 ppm
- Capacity: 3 kg - 1 g with motorized belts 90, 135, 180 mm width
- Capacity: 3 kg - 1 g / 6 kg - 2 g with motorized belts 225 mm width
- Capacity: 6 kg - 2 g with motorized belts 225, 270, 315 mm width
- From 1 to 3 motorized closed loop belts
- Brushless motors and drive boards, speeds up to 70 m/min
- Working temperature: from 0°C to +40°C
- Power supply: 230 Vac (Hz 50/60)
- Maximum power: 1 belt 300 W, 2 belts 300 W, 3 belts 600 W
- 12" resistive PC/Panel display, suitable for use with gloves and in the presence of water/condensation
- Structure and carpentry in aluminum and stainless steel
- Height of belt from the ground: 850 +/- 50 mm
- Machine management via PLC
- LED light column for out of tolerance and alarms

MINI CHECK PLUS

PRODUCT DESCRIPTION

Checkweigher.

It allows you to control predetermined weight products with statistical control that is fully configurable and can be integrated with external software.

Approved (MID)



MAIN FEATURES

- Cadences up to 35 ppm
- Capacity: 3 kg - 1 g with motorized belt 185 mm width
- Capacity: 6 kg - 2 g / 15 kg - 5 g with motorized belt 400 mm width
- 1 closed loop motorized belt
- Brushless motor and drive board, speeds up to 40 m/min
- Working temperature: from 0°C to +40°C
- Power supply: 230 Vac (Hz 50/60)
- Maximum power: 300 W
- 12" resistive PC/Panel display, suitable for use with gloves and in the presence of water/condensation
- Structure and carpentry in aluminum and stainless steel
- Height of belt from the ground: 850 +/- 50 mm
- Machine management via PLC
- Exit for expulsion management
- LED light column out of tolerance

CX DYNAMIC WITH TILTING

PRODUCT DESCRIPTION

Checkweigher for small capacities.
It allows you to control predetermined weight products with statistical control that is fully configurable and can be integrated with external software. Approved (MID)



MAIN FEATURES

- Cadences up to 70 ppm
- Capacity: 3 kg - 1 g / 6 kg - 2 g with motorized belts 225 mm width
- Capacity: 6 kg - 2 g with motorized belts 225, 270, 315 mm width
- Capacity: 15 kg - 5 g with motorized belts 420 mm wide
- 4 motorized closed loop belts
- Brushless motors and drive boards, speeds up to 70 m/min
- Working temperature: from 0°C to +40°C
- Power supply: 230 Vac (Hz 50/60)
- Maximum power: 600 W
- 12" resistive PC/Panel display, suitable for use with gloves and in the presence of water/condensation
- Structure and carpentry in aluminum and stainless steel
- Height of belt from the ground: 850 +/- 50 mm
- Machine management via PLC

WBOX

PRODUCT DESCRIPTION


Checkweigher for large capacities.
It allows you to control predetermined weight products with statistical control that is fully configurable and can be integrated with external software. Approved (MID)



MAIN FEATURES

- Cadences up to 30 ppm
- Capacity: 15 kg - 5 g / 30 kg - 10 g / 60 kg - 20 g with motorized belt 420 mm width
- Capacity: 30 kg - 10 g / 60 kg - 20 g with motorized belts 510 and 700 mm width
- 1 closed loop motorized belt
- Brushless motors and drive board, speeds up to 70 m/min
- Working temperature: from 0°C to +40°C
- Power supply: 230 Vac (Hz 50/60)
- Maximum power: 1 kW
- 12" resistive PC/Panel display, suitable for use with gloves and in the presence of water/condensation
- Structure and carpentry in aluminum and stainless steel
- Height of belt from the ground: 850 +/- 50 mm
- Machine management via PLC



A large industrial automatic labeling machine with a blue frame and a transparent safety enclosure. The machine features two large green rolls of labeling material mounted on the top. A blue conveyor belt runs horizontally across the middle of the machine. The text "AUTOMATIC LABELING MACHINES" is overlaid in white capital letters. The machine is mounted on a sturdy metal base with adjustable feet.

AUTOMATIC LABELING MACHINES

SAP A PLUS

PRODUCT DESCRIPTION

Automatic air blast print and apply labeller.
Fully configurable and integrated with external software.



MAIN FEATURES

- Cadences up to 120 ppm
- Working temperature: from 0°C to +40°C
- Power supply: 230 Vac (Hz 50/60)
- Maximum power: 0.55 kW
- Structure and carpentry in aluminum and stainless steel
- Machine management via PLC
- Printing method: thermal and/or direct transfer
- Resolution: 8 dots/mm, 203 dpi (optional: 12 dots/mm, 300 dpi)
- Print speed: 203 dpi, 457 mm/s - 300 dpi, 300 mm/s
- Label dimensions: from 40x40 to 100 mm x 110 mm
- Print width: 100 mm
- Internal roll diameter: 76 mm
- Roll external diameter: 300 mm
- Ribbon capacity of 600 meters
- Compressed air label application (AIR BLAST), 6 bar 60 l/min, multi-label chamber with mechanical adjustment and position indicator
- Mechanical movement of vertical printing group

SAP B PLUS

PRODUCT DESCRIPTION

Automatic print and apply labeling machine with pneumatic arm.
Fully configurable and integrated with external software.



MAIN FEATURES

- Cadences up to 120 ppm
- Working temperature: from 0°C to +40°C
- Power supply: 230 Vac (Hz 50/60)
- Maximum power: 0.55 kW
- Structure and carpentry in aluminum and stainless steel
- Machine management via PLC
- Printing method: thermal and/or direct transfer
- Resolution: 8 dots/mm, 203 dpi (optional: 12 dots/mm, 300 dpi)
- Print speed: 203 dpi, 457 mm/s - 300 dpi, 300 mm/s
- Label dimensions: from 40x40 to 100 mm x 110 mm
- Print width: 104 mm
- Internal roll diameter: 76 mm
- Roll external diameter: 300 mm
- Ribbon capacity of 600 meters
- Label application via rotary pneumatic arm with sponge application plate, consumption 4/6 bar 40 l/min, multi-label chamber with mechanical adjustment and position indicator
- Mechanical movement of vertical printing group

SAP L PLUS

PRODUCT DESCRIPTION

Automatic lateral air blast print and apply labeller.
Fully configurable and integrated with external software.



MAIN FEATURES

- Cadences up to 120 ppm
- Working temperature: from 0°C to +40°C
- Power supply: 230 Vac (Hz 50/60)
- Maximum power: 0.55 kW
- Structure and carpentry in aluminum and stainless steel
- Machine management via PLC
- Printing method: thermal and/or direct transfer
- Resolution: 8 dots/mm, 203 dpi (optional: 12 dots/mm, 300 dpi)
- Print speed: 203 dpi, 457 mm/s - 300 dpi, 300 mm/s
- Label dimensions: from 40x40 to 100 mm x 110 mm
- Print width: 104 mm
- Internal roll diameter: 76 mm
- Roll external diameter: 300 mm
- Ribbon capacity of 600 meters
- Label application with compressed air (AIR BLAST), 6 bar 60 l/min, multi-label chamber with mechanical adjustment and position indicator
- Mechanical movement of vertical printing group

SAP A PLUS NT

PRODUCT DESCRIPTION

Automatic air blast print and apply labeller with belt and touch screen.

Fully configurable and integrated with external software.



MAIN FEATURES

- Cadences up to 120 ppm
- Brushless motor and drive board, speed up to 70 m/min
- Working temperature: from 0°C to +40°C
- Power supply: 230 Vac (Hz 50/60)
- Maximum power: 0.85 kW
- 12" resistive PC/Panel display, suitable for use with gloves and in the presence of water/condensation
- Structure and carpentry in aluminum and stainless steel
- Height of belt from the ground: 850 +/- 50 mm
- Machine management via PLC
- Printing method: thermal and/or direct transfer
- Resolution: 8 dots/mm, 203 dpi (optional: 12 dots/mm, 300 dpi)
- Print speed: 203 dpi, 457 mm/s - 300 dpi, 300 mm/s
- Label dimensions: from 40x40 to 110 mm x 110 mm
- Print width: 104 mm
- Internal roll diameter: 76 mm
- Roll external diameter: 300 mm
- Ribbon capacity of 600 meters
- Compressed air label application (AIR BLAST), 6 BAR 60 l/min, multi-label chamber with mechanical adjustment and position indicator
- Mechanical movement of the horizontal, vertical and rotational printing group (180°)

SAP B PLUS NT

PRODUCT DESCRIPTION

Automatic print and apply labeller with pneumatic arm with belt and touch screen.
Fully configurable and integrated with external software.



MAIN FEATURES

- Cadences up to 80 ppm for higher application
- Cadences up to 50 ppm for frontal application
- Brushless motor and drive board, speed up to 70 m/min
- Working temperature: from 0°C to +40°C
- Power supply: 230 Vac (Hz 50/60)
- Maximum power: 0.85 kW
- 12" resistive PC/Panel display, suitable for use with gloves and in the presence of water/condensation
- Structure and carpentry in aluminum and stainless steel
- Height of belt from the ground: 850 +/- 50 mm
- Machine management via PLC
- Printing method: thermal and/or direct transfer
- Resolution: 8 dots/mm, 203 dpi (optional: 12 dots/mm, 300 dpi)
- Print speed: 203 dpi, 457 mm/s - 300 dpi, 300 mm/s
- Label dimensions: from 40x40 to 110 mm x 110 mm
- Print width: 104 mm
- Internal roll diameter: 76 mm
- Roll external diameter: 300 mm
- Ribbon capacity of 600 meters
- Label application via pneumatic rotary arm with sponge application plate
- Air consumption: 4/6 bar 40 l/min
- Mechanical movement of the horizontal, vertical and rotational printing group (180°)

SAP L PLUS NT

PRODUCT DESCRIPTION

Automatic linear piston print and apply labeller with belt and touch screen.

Fully configurable and integrated with external software.



MAIN FEATURES

- Cadences up to 120 ppm
- Brushless motor and drive board, speed up to 70 m/min
- Working temperature: from 0°C to +40°C
- Power supply: 230 Vac (Hz 50/60)
- Maximum power: 0.85 kW
- 12" resistive PC/Panel display, suitable for use with gloves and in the presence of water/condensation
- Structure and carpentry in aluminum and stainless steel
- Height of belt from the ground: 850 +/- 50 mm
- Machine management via PLC
- Printing method: thermal and/or direct transfer
- Resolution: 8 dots/mm, 203 dpi (optional: 12 dots/mm, 300 dpi)
- Print speed: 203 dpi, 457 mm/s - 300 dpi, 300 mm/s
- Label dimensions: from 40x40 to 110 mm x 110 mm
- Print width: 104 mm
- Internal roll diameter: 76 mm
- Roll external diameter: 300 mm
- Ribbon capacity of 600 meters
- Label application via linear pneumatic piston with sponge application plate
- Air consumption: 4/6 bar 40 l/min
- Mechanical movement of vertical printing group

SAP P PLUS NT

PRODUCT DESCRIPTION

Automatic linear piston print and apply labeller with belt and touch screen.

Fully configurable and integrated with external software.



MAIN FEATURES

- Cadences up to 50 ppm
- Brushless motor and drive board, speed up to 70 m/min
- Working temperature: from 0°C to +40°C
- Power supply: 230 Vac (Hz 50/60)
- Maximum power: 0.85 kW
- 12" resistive PC/Panel display, suitable for use with gloves and in the presence of water/condensation
- Structure and carpentry in aluminum and stainless steel
- Height of belt from the ground: 850 +/- 50 mm
- Machine management via PLC
- Printing method: thermal and/or direct transfer
- Resolution: 8 dots/mm, 203 dpi (optional: 12 dots/mm, 300 dpi)
- Print speed: 203 dpi, 457 mm/s - 300 dpi, 300 mm/s
- Label dimensions: from 40x40 to 110 mm x 110 mm
- Print width: 104 mm
- Internal roll diameter: 76 mm
- Roll external diameter: 300 mm
- Ribbon capacity of 600 meters
- Label application via linear pneumatic piston with sponge application plate
- Air consumption: 4/6 bar 40 l/min
- Mechanical movement of the horizontal, vertical and rotational printing group (180°)

AS2 PLUS NT

PRODUCT DESCRIPTION

Automatic print and apply labeller from below.

Fully configurable and integrated with external software.



MAIN FEATURES

- Cadences up to 150 ppm
- Brushless motors and drive boards, speed up to 70 m/min
- Working temperature: from 0°C to +40°C
- Power supply: 230 Vac (Hz 50/60)
- Maximum power: 1.15 kW
- 12" resistive PC/Panel display, suitable for use with gloves and in the presence of water/condensation
- Structure and carpentry in aluminum and stainless steel
- Height of belt from the ground: 850 +/- 50 mm
- Machine management via PLC
- Printing method: thermal and/or direct transfer
- Resolution: 8 dots/mm, 203 dpi (optional: 12 dots/mm, 300 dpi)
- Print speed: 203 dpi, 457 mm/s - 300 dpi, 300 mm/s
- Label dimensions: from 40x40 to 110 mm x 110 mm
- Print width: 104 mm
- Internal roll diameter: 76 mm
- Roll external diameter: 300 mm
- Ribbon capacity of 600 meters
- Label application with electronic motorized belt
- Air consumption: 6 bar 60 l/min
- Mechanical movement of the horizontal, vertical and rotational printing group (180°)

SAP PX1 PLUS

PRODUCT DESCRIPTION

Automatic linear piston print and apply labeling machine for 4" and/or 6" pallets.

Fully configurable and integrated with external software.

Label application on one side of the product.

Lateral positioning of the printing unit.



MAIN FEATURES

- Working temperature: from 0°C to +40°C
- Power supply: 230 Vac (Hz 50/60)
- Maximum power: 1.85 kW
- 12" resistive PC/Panel display, suitable for use with gloves and in the presence of water/condensation
- Structure and carpentry in aluminum and stainless steel
- Machine management via PLC
- Label application via linear pneumatic piston with sponge application plate
- Air consumption: 4/6 bar 40 l/min
- Mechanical movement of vertical printing group
- Automatic stop and application management
- Connectable to weighing platforms (optional)

6" PRINTING GROUP:

- Printing method: thermal and/or direct transfer
- Resolution: 8 dots/mm, 203 dpi (optional: 12 dots/mm, 300 dpi)
- Print speed: 203 dpi, 457 mm/s - 300 dpi, 300 mm/s
- Max label dimensions: 168x200
- Print width: 168 mm
- Internal roll diameter: 76 mm
- Roll external diameter: 300 mm
- Ribbon capacity of 600 meters



SAP PX2 PLUS

PRODUCT DESCRIPTION

Automatic 6" print and apply labeller with linear guides and brushless motors.

Fully configurable and integrated with external software.

Label application on two sides of the product.

Vertical positioning of the printing unit.



MAIN FEATURES

- Working temperature: from 0°C to +40°C
- Power supply: 230 Vac (Hz 50/60)
- Maximum power: 1.85 kW
- 12" resistive PC/Panel display, suitable for use with gloves and in the presence of water/condensation
- Structure and carpentry in aluminum and stainless steel
- Machine management via PLC
- Label application via linear guide with brushless motors and application plate
- Air consumption: 4/6 bar 40 l/min
- Mechanical movement of vertical printing group
- Automatic stop and application management
- Connectable to weighing platforms (optional)

6" PRINTING GROUP:

- Printing method: thermal and/or direct transfer
- Resolution: 8 dots/mm, 203 dpi (optional: 12 dots/mm, 300 dpi)
- Print speed: 203 dpi, 457 mm/s - 300 dpi, 300 mm/s
- Max label dimensions: 168x200
- Print width: 168 mm
- Internal roll diameter: 76 mm
- Roll external diameter: 300 mm
- Ribbon capacity of 600 meters



FLASH APS

PRODUCT DESCRIPTION

Labeling machine for label applications to the top of products.

Precise labeling, efficient speed and great reliability.



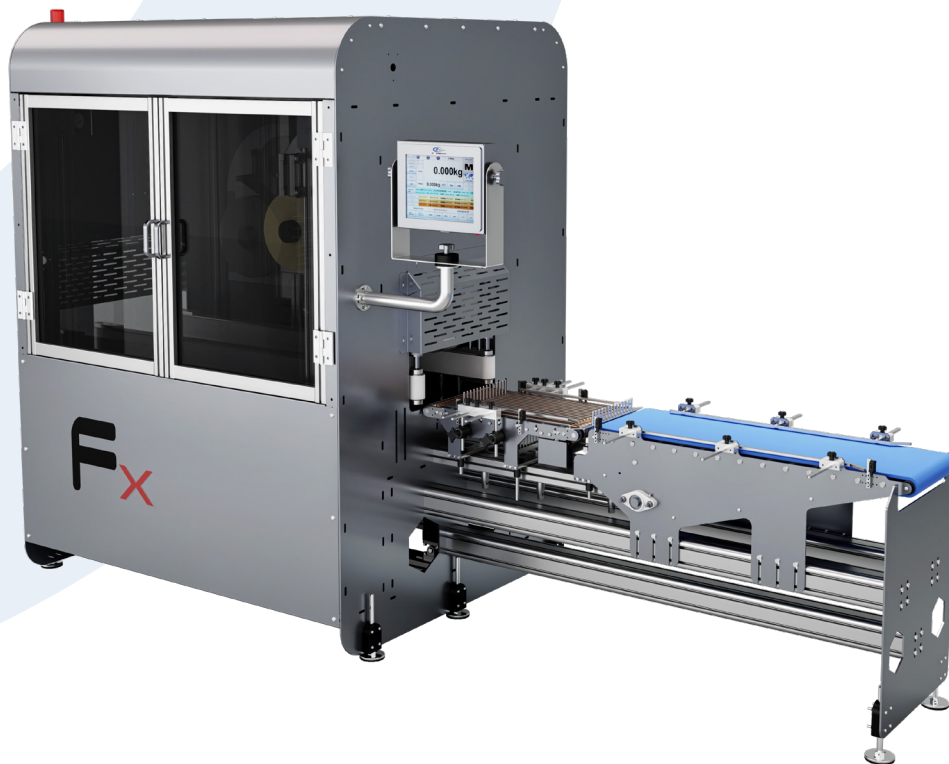
MAIN FEATURES

- Cadences up to 100 ppm
- Working temperature: from 0°C to +40°C
- Power supply: 230 Vac (Hz 50/60)
- Structure and carpentry in aluminum and stainless steel
- Label dispensing speed up to 40 m/min
- Label width from 20 to 100 mm
- Label width from 20 to 620 mm
- Roll diameter 250 mm
- Multilingual 4.3" color control panel
- 100 program memory
- Pre T-ino-bobin control
- Paper break alarms
- External traffic light control
- Inkset printing control
- Label pre-dispensing control for two-step label application
- Machine management via PLC

FX SPECIAL

PRODUCT DESCRIPTION

Seal labeller with application from 180° to 360°



MAIN FEATURES

- Cadences up to 70 ppm
- 2 vertical brushless motorized belts, closed loop (centering) with electronic positioning by touch
- Power supply: 230 Vac (Hz 50/60)
- 12" resistive PC/Panel display, suitable for use with gloves and in the presence of water/condensation
- Structure and carpentry in aluminum and stainless steel
- Machine management via PLC
- Printing method: thermal and/or direct transfer
- Label application with controlled suction chamber
- Positioning of the vertical, electronic printing unit for the correct application of the label on the product
- Horizontal printing unit positioning, mechanical on linear bearing guide, electronic (optional)
- Belt aligner with brushless motor and pneumatic barrier system for product alignment
- Machine management program
- Program for printing and editing labels with image technology
- SW custom label
- Multilingual selection

4" PRINTING GROUP:

- Resolution: 8 dots/mm, 203 dpi (optional: 12 dots/mm, 300 dpi)
- Print speed: 203 dpi, 457 mm/s - 300 dpi, 300 mm/s
- Max label size: 110mm x 200mm
- Print width: 104 mm
- Internal roll diameter: 76 mm
- Roll external diameter: 300 mm
- Ribbon capacity of 600 meters



FX A360

PRODUCT DESCRIPTION

Labeling machine for 180° and/or 360° application with double application head.



MAIN FEATURES

- Cadences up to 60 ppm
- Two labeling heads in tandem version
- Vertical step-by-step belt motors / encoders with horizontal adjustment
- Flat belt for product transport with double belt controlled by encoders
- 7" resistive display
- Structure and carpentry in aluminum and stainless steel
- Machine management via PLC
- Protection with door and safety micro
- Working temperature: from 0°C to +40°C
- Power supply: 230 Vac (Hz 50/60)





WEIGHT INDICATORS WEIGHING MODULES MANUAL LABELERS

TS D 12

PRODUCT DESCRIPTION

Fully configurable 12" industrial PANEL PC display.



MAIN FEATURES

- Working temperature: from 0°C to +40°C
- Power supply: 230 Vac (Hz 50/60)
- Maximum power: 15.6 W
- 12" resistive PC/Panel display, suitable for use with gloves and in the presence of water/condensation
- Structure and carpentry in aluminum and stainless steel
- CE-M approved version for legal use in relation to third parties



TS D 19

PRODUCT DESCRIPTION

Fully configurable 19" industrial PANEL PC display.



MAIN FEATURES

- Working temperature: from 0°C to +40°C
- Power supply: 230 Vac (Hz 50/60)
- Maximum power: 15.6 W
- 19" resistive PC/Panel display, suitable for use with gloves and in the presence of water/condensation
- Structure and carpentry in aluminum and stainless steel
- CE-M approved version for legal use in relation to third parties



HI

PRODUCT DESCRIPTION

IP62 stainless steel electronic weighing platform.
Standard version with approved cell.



MAIN FEATURES

- Operation with approved “single point” stainless steel load cell, according to OIML R60 standards with protection from dust and humidity and according to IP67 standards
- Structure with tubulars, mechanics, miniatures and satin finish loading surface in AISI304
- Adjustable stainless steel feet with plastic support and level bubble
- Max power supply: 15 Vdc
- 3 m shielded connection cable complete with connectors for display connection

QI

PRODUCT DESCRIPTION

IP65 stainless steel electronic single cell weighing platform.

Standard version with approved cell.



MAIN FEATURES

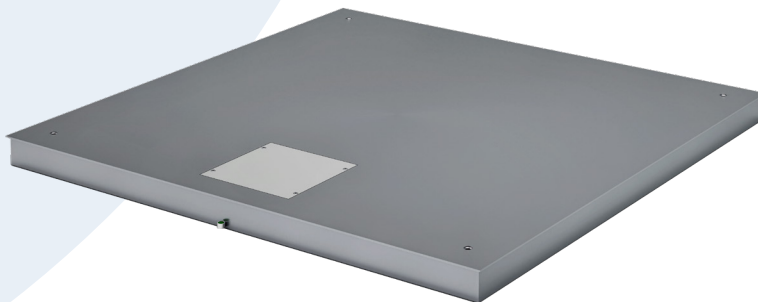
- Operation with approved “single point” stainless steel load cell, according to OIML R60 standards with protection from dust and humidity and according to IP67 standards
- Sheet metal structure and satin AISI304 stainless steel loading surface
- Adjustable stainless steel feet with plastic support and level bubble
- Max power supply: 15 Vdc
- 3 m shielded connection cable complete with connectors for display connection

PI

PRODUCT DESCRIPTION

Stainless steel electronic weighing platform with four load cells.

Standard four-cell version approved.



MAIN FEATURES

- Operation with four approved “single point” load cells in stainless steel, according to OIML R60 standards with protection from dust and humidity and according to IP67 standards
- AISI304 stainless steel tubular load-bearing structure and loading surface, IP67 junction box
- Adjustable anti-shock articulated stainless steel feet and level bubble
- Max power supply: 15 Vdc
- Hermetic junction box and cable wiring with IP67 compliant protective sheaths, 5 m 6-pole shielded cable for display connection complete with connectors

SD PLUS

PRODUCT DESCRIPTION

Can be used as a totalizer for automatic systems or table labels.

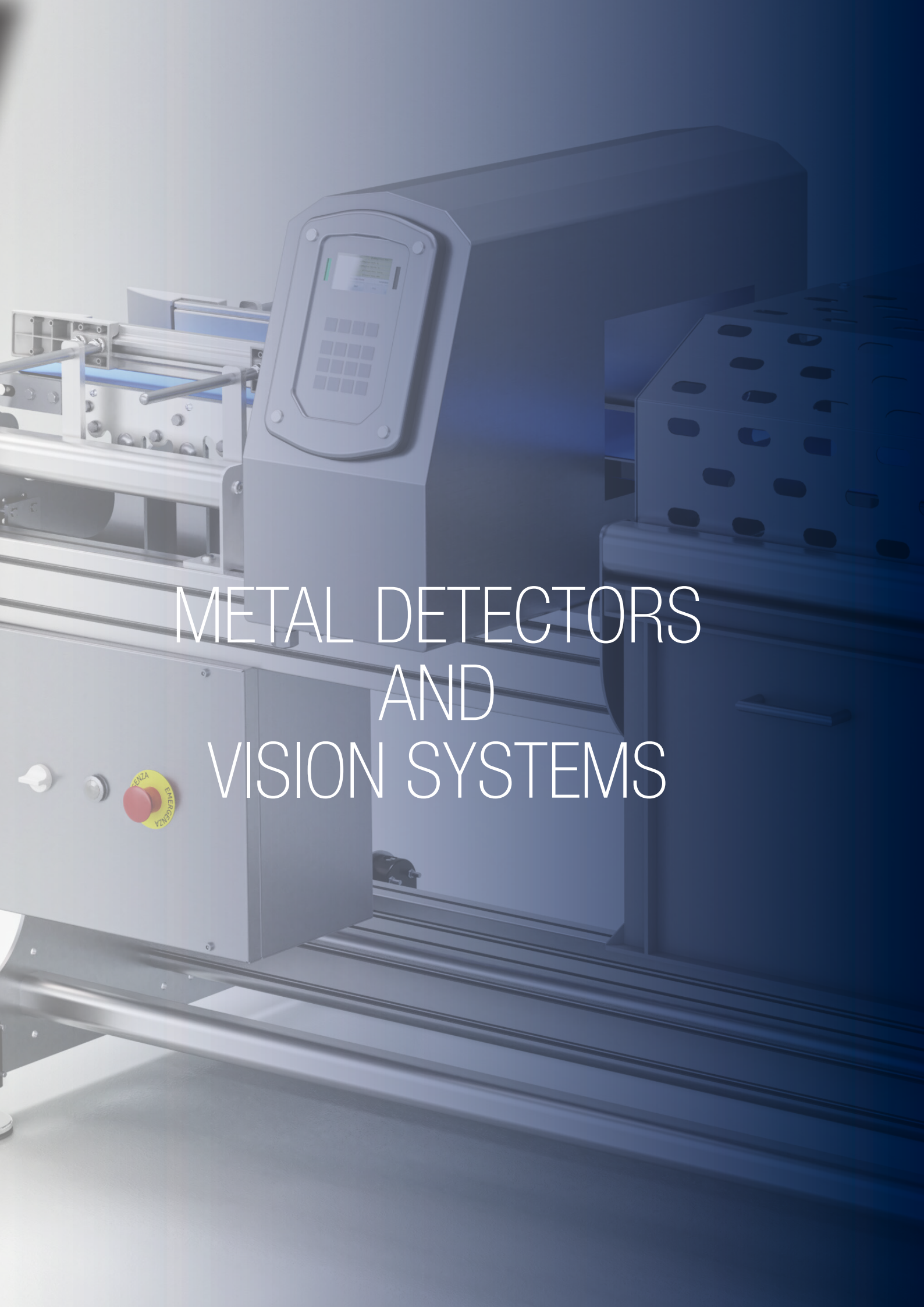


MAIN FEATURES

- Printing method: thermal and/or direct transfer
- Resolution: 203 dpi
- Printing speed up to 254 mm/s
- Print width: 108mm
- Print length: 25,400 mm
- Internal diameter: 25.4 or 76.2 mm
- External diameter: 203 mm
- Ribbon capacity 450 m long internal and external ink





A detailed 3D rendering of an industrial metal detector and vision system. The machine is primarily grey and blue, with a control panel featuring a small screen and a keypad. A red emergency stop button is visible on the side. The system is designed for inspecting items on a conveyor belt, with a perforated metal structure on the right side. The background is a soft blue gradient.

METAL DETECTORS AND VISION SYSTEMS

TMS

PRODUCT DESCRIPTION

Monofrequency metal detector



MAIN FEATURES

- Brushless motors and drive boards, speeds up to 55 m/min
- Working temperature: from 0°C to +40°C
- Power supply: 230 Vac (Hz 50/60)
- Maximum power: 800 W (with brushless motor)
- Structure and carpentry in aluminum and stainless steel
- Height of belt from the ground: 850 +/- 50 mm
- Control Power Box available according to Standards UL 508A and CSA-C22.2 No. 14-05
- Light column with LED technology

PROBES:

- Superior detection capability of magnetic and non-magnetic metallic contaminants including stainless steels
- Effective compensation of the effect produced
- Complies with FDA 21 CFR Part 11: Safety; Integrity; Data traceability
- Structure in AISI 316L stainless steel and EU, FDA compliant food-grade plastic materials
- Superior construction can withstand high pressure washdowns
- High sensitivity to all magnetic and non-magnetic metals including stainless steels
- Multi-frequency technology for maximum sensitivity to changes in the Product Effect
- High immunity to environmental disturbances
- Structure and components in AISI 316L stainless steel with IP65 protection rating
- 250 storable products, selectable from local programming or network software
- 1000 archiveable events
- 4x20 character alphanumeric display
- Local programming: 4 keys (3 with dual function)

TMS M

PRODUCT DESCRIPTION

Multispectrum metal detector.



MAIN FEATURES

- Brushless motors and drive boards, speeds up to 55 m/min
- Working temperature: from 0°C to +40°C
- Power supply: 230 Vac (Hz 50/60)
- Maximum power: 800 W (with brushless motor)
- Structure and carpentry in aluminum and stainless steel
- Height of belt from the ground: 850 +/- 50 mm
- Control Power Box available according to Standards UL 508A and CSA-C22.2 No. 14-05
- Light column with LED technology

PROBES:

- Superior detection capability of magnetic and non-magnetic metallic contaminants including stainless steels
- Effective compensation of the effect produced
- Complies with FDA 21 CFR Part 11: Safety; Integrity; Data traceability
- Structure in AISI 316L stainless steel and EU, FDA compliant food-grade plastic materials
- Superior construction can withstand high pressure washdowns
- High sensitivity to all magnetic and non-magnetic metals including stainless steels
- Multi-frequency technology for maximum sensitivity to changes in the Product Effect
- High immunity to environmental disturbances
- Structure and components in AISI 316L stainless steel with IP65 protection rating
- 250 storable products, selectable from local programming or network software
- 1000 archiveable events
- 4x20 character alphanumeric display
- Local programming: 4 keys (3 with dual function)

TMS ML

PRODUCT DESCRIPTION

Multispectrum metal detector on elevator belt.



MAIN FEATURES

- Three-phase AC and inverter motors, speed up to 40 m/min
- Working temperature: from 0°C to +40°C
- Power supply: 230 Vac / 380 Vac (Hz 50/60)
- Maximum power: 800 W (with brushless motor)
- Structure and carpentry in aluminum and stainless steel
- Variable belt height according to request
- Control Power Box available according to Standards UL 508A and CSA-C22.2 No. 14-05
- Light column with LED technology

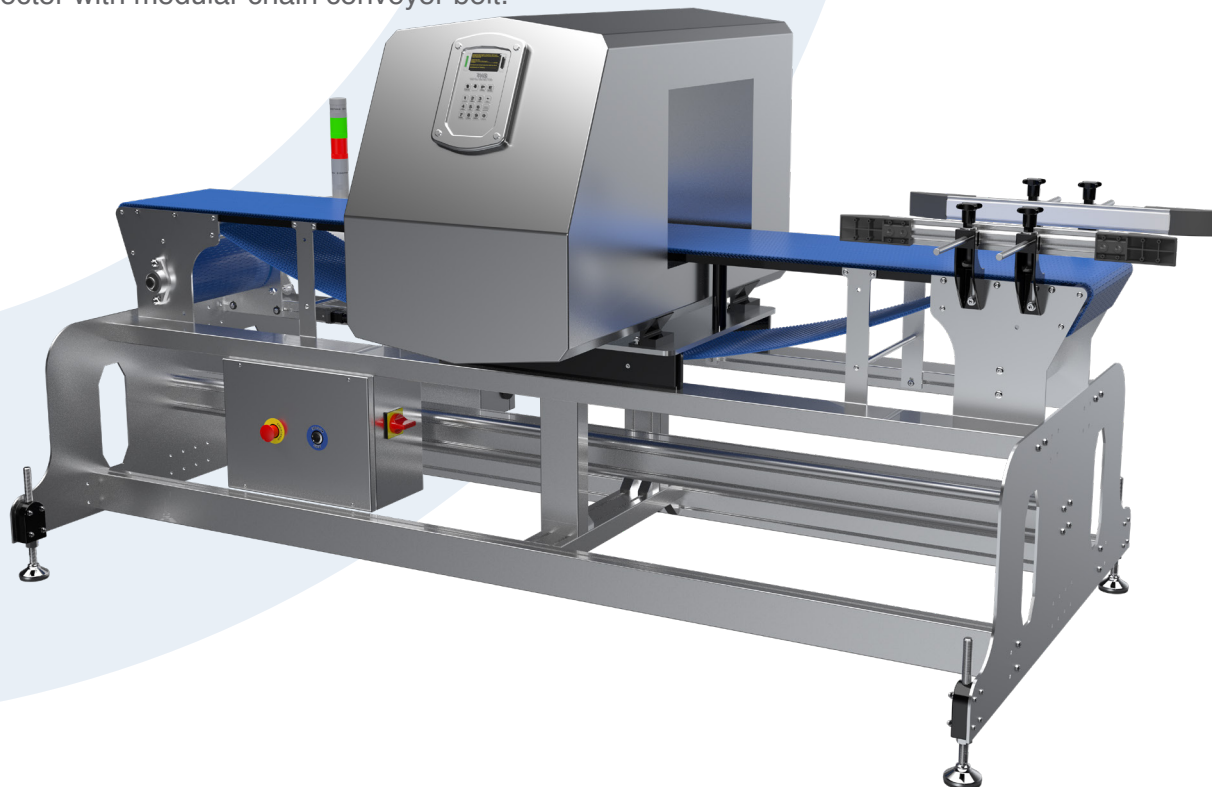
PROBES:

- Superior detection capability of magnetic and non-magnetic metallic contaminants including stainless steels
- Effective compensation of the effect produced
- Complies with FDA 21 CFR Part 11: Safety; Integrity; Data traceability
- Structure in AISI 316L stainless steel and EU, FDA compliant food-grade plastic materials
- Superior construction can withstand high pressure washdowns
- High sensitivity to all magnetic and non-magnetic metals including stainless steels
- Multi-frequency technology for maximum sensitivity to changes in the Product Effect
- High immunity to environmental disturbances
- Structure and components in AISI 316L stainless steel with IP65 protection rating
- 250 storable products, selectable from local programming or network software
- 1000 archiveable events
- 4x20 character alphanumeric display
- Local programming: 4 keys (3 with dual function)

TMS MOD

PRODUCT DESCRIPTION

Metal detector with modular chain conveyor belt.



MAIN FEATURES

- Three-phase AC and inverter motors, speed up to 40 m/min
- Working temperature: from 0°C to +40°C
- Power supply: 230 Vac / 380 Vac (Hz 50/60)
- Maximum power: 800 W (with brushless motor)
- Structure and carpentry in aluminum and stainless steel
- Variable belt height according to request
- Control Power Box available according to Standards UL 508A and CSA-C22.2 No. 14-05
- Light column with LED technology

PROBES:

- Superior detection capability of magnetic and non-magnetic metallic contaminants including stainless steels
- Effective compensation of the effect produced
- Complies with FDA 21 CFR Part 11: Safety; Integrity; Data traceability
- Structure in AISI 316L stainless steel and EU, FDA compliant food-grade plastic materials
- Superior construction can withstand high pressure washdowns
- High sensitivity to all magnetic and non-magnetic metals including stainless steels
- Multi-frequency technology for maximum sensitivity to changes in the Product Effect
- High immunity to environmental disturbances
- Structure and components in AISI 316L stainless steel with IP65 protection rating
- 250 storable products, selectable from local programming or network software
- 1000 archiveable events
- 4x20 character alphanumeric display
- Local programming: 4 keys (3 with dual function)

CSV

PRODUCT DESCRIPTION

Automatic vision system for artificial recognition



MAIN FEATURES

- 1 motorized closed loop belt from 230 to 420 mm width
- Brushless motor and drive boards, speed up to 90 m/min
- Working temperature: from 0°C to +40°C
- Maximum power: 1.15 kW
- 12" resistive PC/Panel display, suitable for use with gloves and in the presence of water/condensation
- Structure and carpentry in aluminum and stainless steel
- Height of belt from the ground: 850 +/- 50 mm
- Machine management via PLC
- Simultaneous/individual acquisition with two cameras
- Up to four industrial cameras can be installed, very high acquisition speed according to viewing needs
- LED lighting unit
- Dedicated software for managing the vision system
- Light column with LED technology

LC 2D TOP

PRODUCT DESCRIPTION

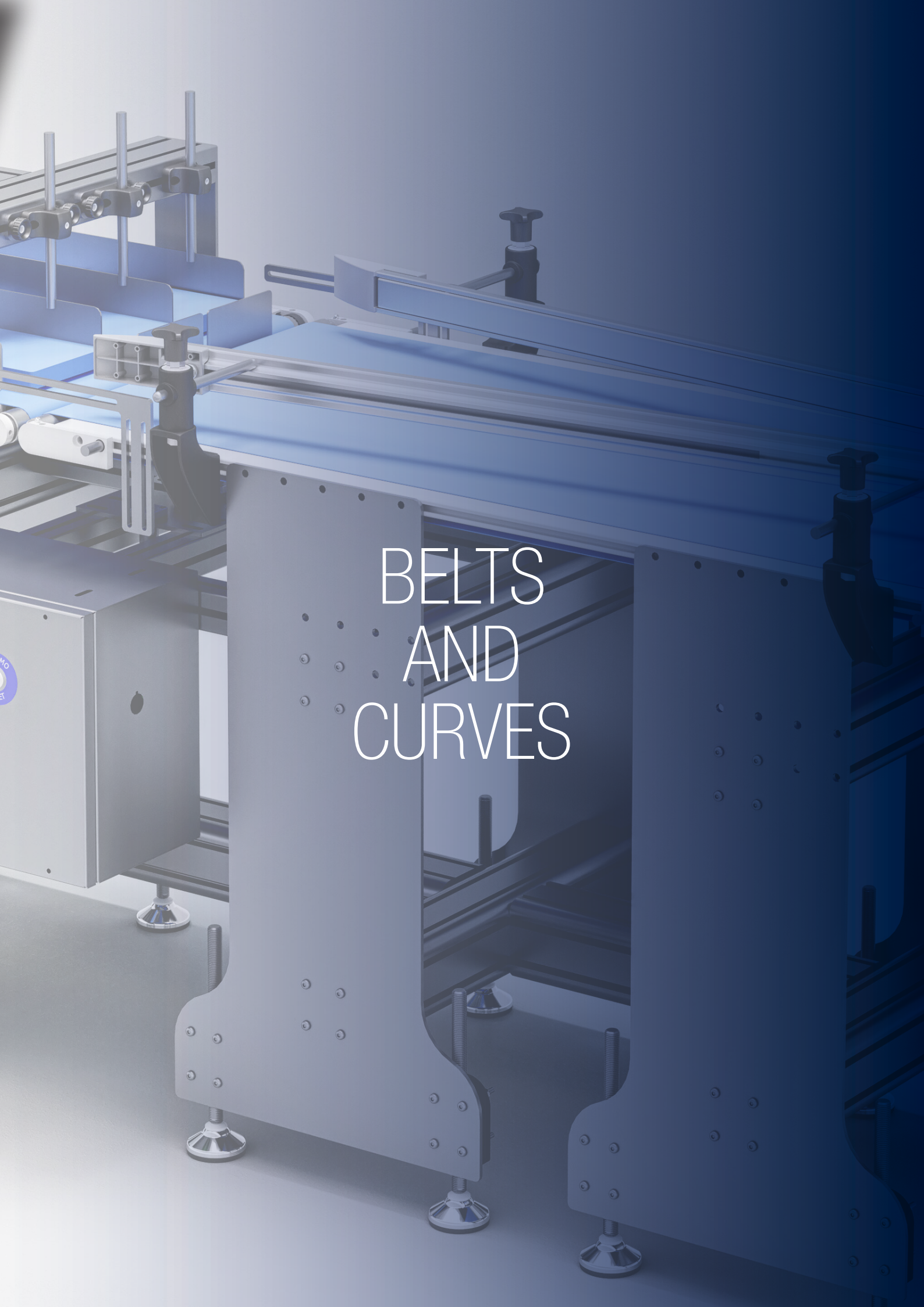
Barcode detection system



MAIN FEATURES

- IP65 digital barcode reader
- Sensor: CMOS images
- 1280x1024 pixels
- Light source: High intensity red LED
- Pointer light source: High intensity green LED
- Focus adjustment: auto focus
- Reading distance: from 110 to 1000 mm
- Minimum 2D resolution: 0.063 mm
- Minimum barcode resolution: 0.082 mm
- Supported codes: QR, MicroQR, DataMatrix (ECC200), GS1 DataMatrix, PDF417, Micro PDF417, GS1 Composite (CC-A, CC-B, CC-C)
- Barcode: GS1 DataBar, CODE39, CODE39 Full ASCII, ITF, NW-7 (Codabar), CODE128, 2of5 (Industrial 2of5), COOP 2of5 GS1-128, JAN/EAN/UPC, Trioptic CODE39, CODE93, pharmacode.
- Operating ambient temperature: from 0 °C to 45 °C
- Storage ambient temperature: - 10 °C to + 50 °C
- Operating ambient humidity: 35 to 95% relative humidity, non-condensing
- Fully automatic adjustment/function control on site without PC
- The code reader automatically optimizes exposure, image processing filter and other parameters based on the target and installation distance



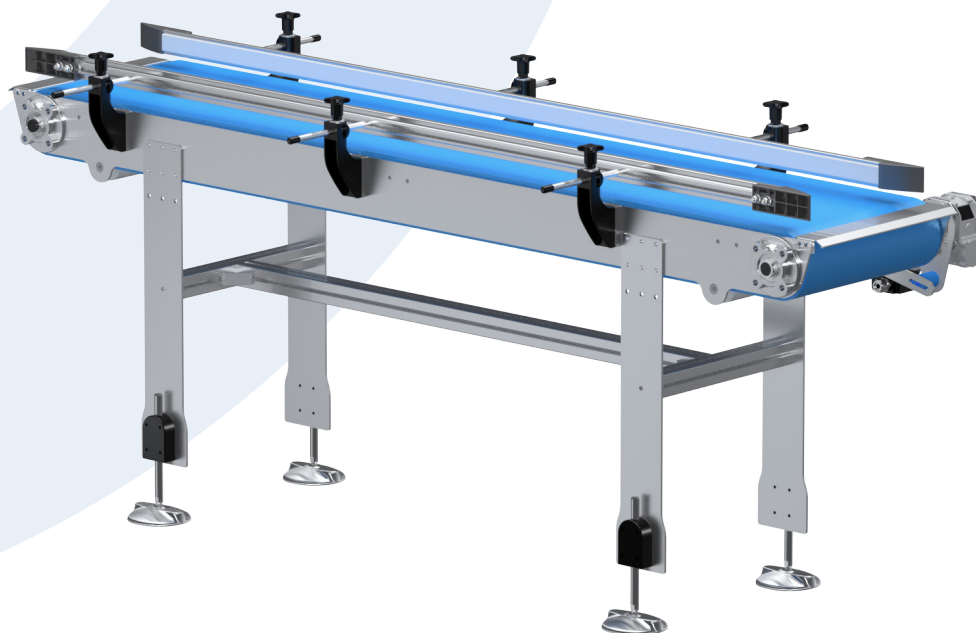


BELTS AND CURVES

NT MOD

PRODUCT DESCRIPTION

Modular chain conveyor belt



MAIN FEATURES

- Power supply: 380 and/or 220 Vac (Hz 50/60)
- Structure and sides in AISI 304 stainless steel
- Solid rollers in AISI 304 stainless steel
- Adjustable bearings in AISI 304 stainless steel
- Adjustable feet in AISI 304 stainless steel
- Available widths: 153, 229, 305, 382, 458, 534, 610, 687, 763, 1983 mm
- Standard electrical control panel with start-stop inverter of a user, applied on the machine, with presence of emergency button and start-stop button with variable speed (optional)

CS MOD

PRODUCT DESCRIPTION

Modular chain conveyor belt curve.



MAIN FEATURES

- Power supply: 380 and/or 220 Vac (Hz 50/60)
- Structure and sides in AISI 304 stainless steel
- Solid rollers in AISI 304 stainless steel
- Adjustable bearings in AISI 304 stainless steel
- Adjustable feet in AISI 304 stainless steel
- Curves available: 45° / 90° / 180°
- Available widths: 152, 228, 304, 380, 456, 532, 608, 684, 760, 836, 912, 988, 1597, 1977 mm
- Standard electrical control panel with start-stop inverter of a user, applied on the machine, with presence of emergency button and start-stop button with variable speed (optional)

NT

PRODUCT DESCRIPTION

High speed electronic conveyor belt with brushless motor and drive panel



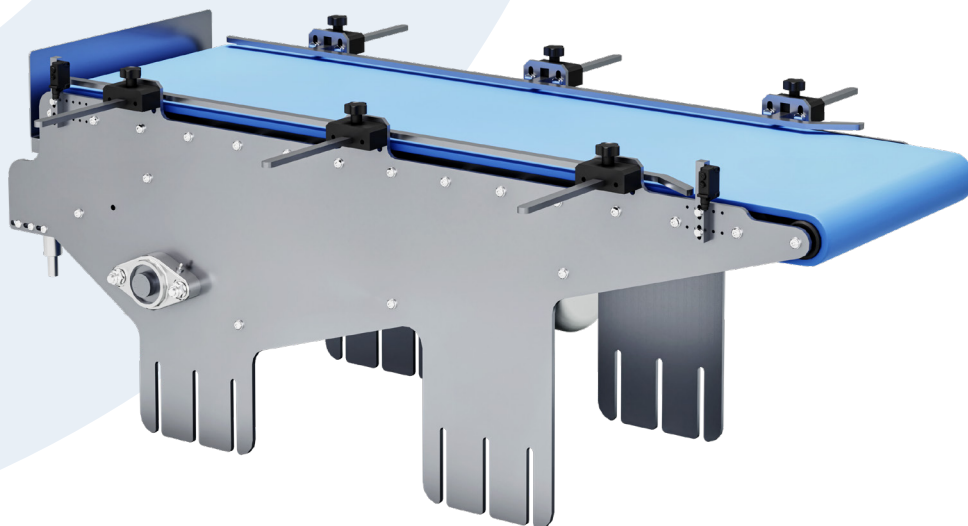
MAIN FEATURES

- PU conveyor belt
- Brushless motor and AN drive board
- Variable speed adjustment from 10 m/min to 75 m/min
- Power supply: 230 V (Hz 50/60)
- Maximum power: 300 W
- Structure and carpentry in aluminum and AISI 304 stainless steel and anodized aluminium
- Transport from 1 g to 30 kg

NS

PRODUCT DESCRIPTION

Synchronized accumulator belt



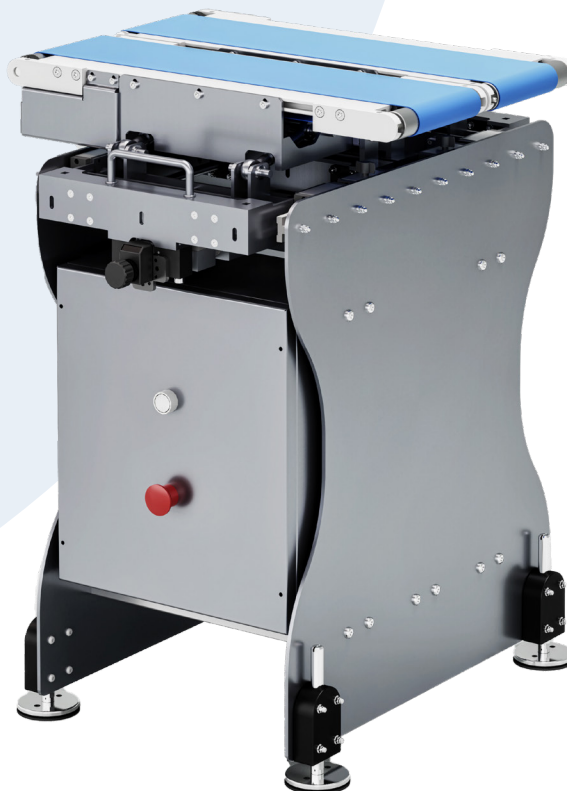
MAIN FEATURES

- Modular belt
- Brushless motor and drive board, speed up to 70 m/min
- Working temperature: from 0°C to +40°C
- Power supply: 230 Vac (Hz 50/60)
- Maximum power: 1.1 kW
- Structure and carpentry in aluminum and stainless steel
- Machine management via PLC
- Electrical panel with mushroom and reset
- Pneumatic barrier system for product accumulation

AL 500

PRODUCT DESCRIPTION

Aligning light signal.



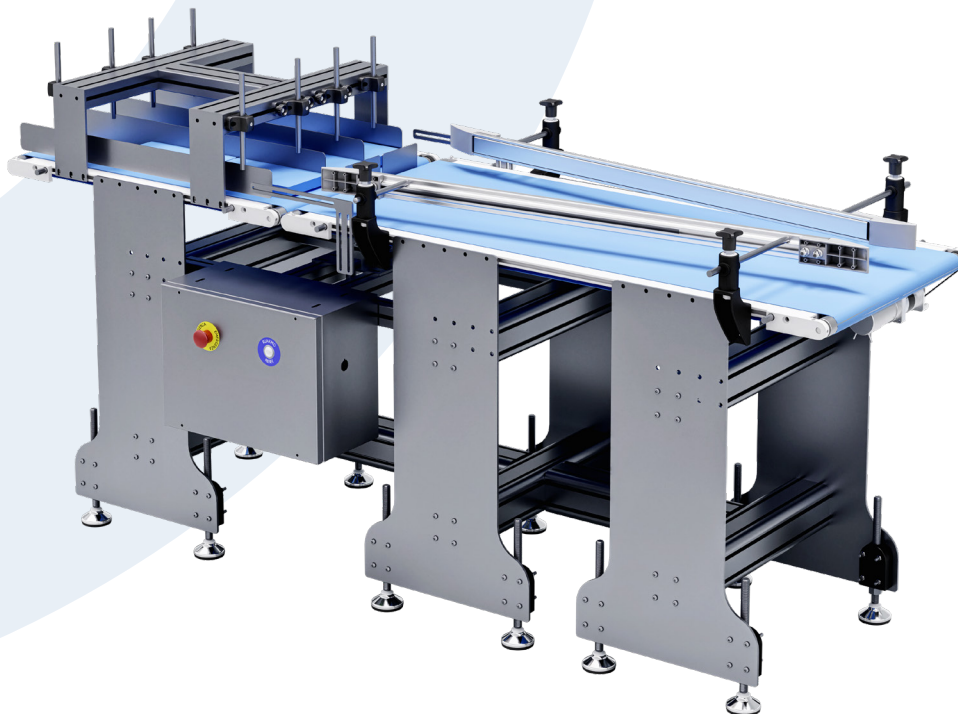
MAIN FEATURES

- Cadences up to 120 ppm
- 2 motorized closed loop belts, 230, 275 and 320 mm width
- 2 brushless motors and drive boards, speed up to 70 m/min
- Working temperature: from 0°C to +40°C
- Power supply: 230 Vac (Hz 50/60)
- Maximum power: 1 kW
- Structure and carpentry in aluminum and stainless steel
- Machine management via PLC
- Electrical panel with mushroom and reset

AL 3V

PRODUCT DESCRIPTION

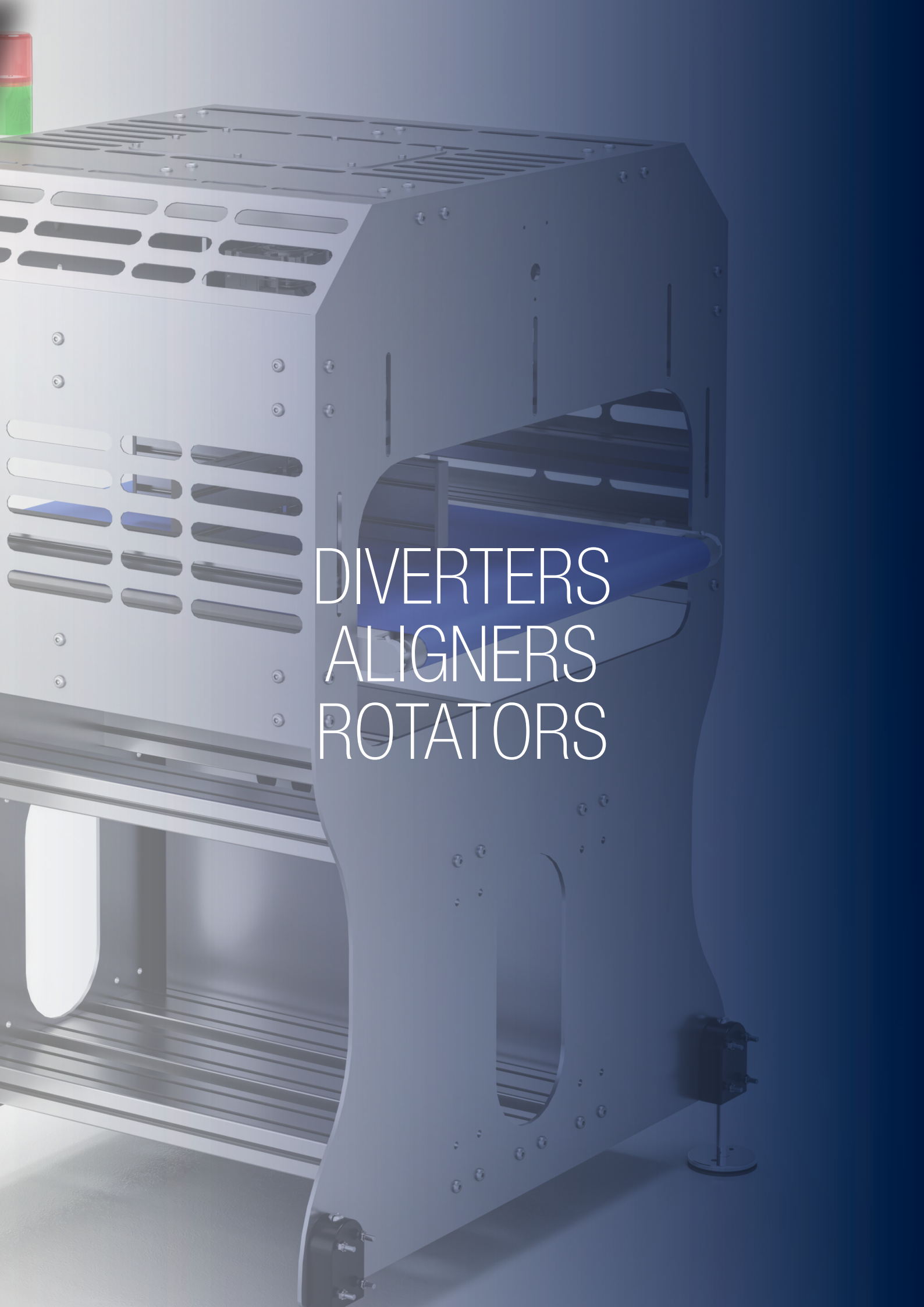
Aligner



MAIN FEATURES

- 2/3 row aligner with adjustable channeling system with pneumatic barrier stop and funnel belt
- Power supply: 230 Vac (Hz 50/60)
- Maximum power: 1.5 kW
- Closed loop motorized aligner belt 480 x 750 width
- Brushless motor and drive boards speed up to 50 m/min
- Structure and carpentry in aluminum and stainless steel
- Motorized closed loop funnel belt 480 x 1250 width
- Electrical panel with mushroom and reset
- Machine management via dedicated cycle PLC for 2/3 tray operation





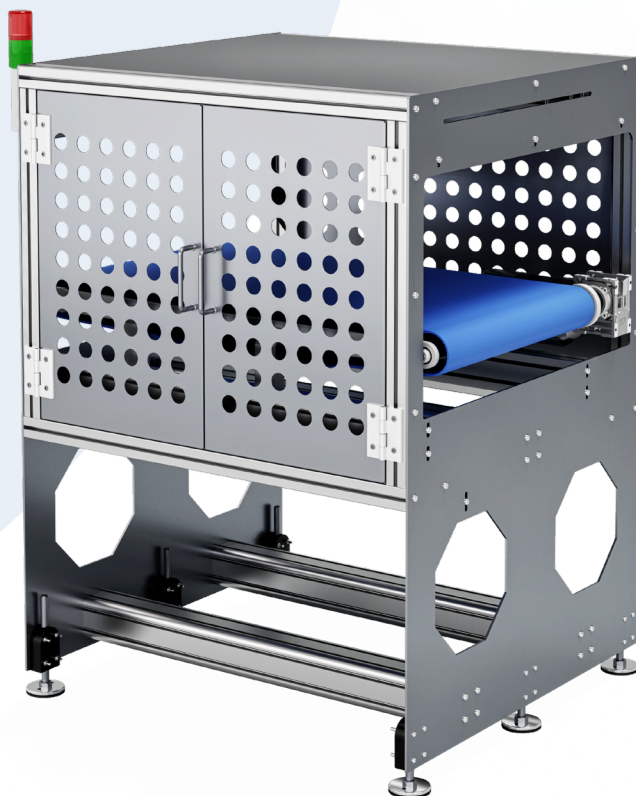
The image shows a complex, industrial machine, possibly a particle accelerator component. It features a large, rectangular metal housing with a series of horizontal slots or apertures on the left side. A blue beam of light or particles is visible passing through a central aperture. The machine is mounted on a base with a large, curved support structure. The background is a solid blue color.

DIVERTERS
ALIGNERS
ROTATORS

DV A

PRODUCT DESCRIPTION

Pneumatic diverter for direction change.
Direction selection based on the signal.



MAIN FEATURES

- Cadences up to 120 ppm
- 1 motorized closed loop belt from 500 to 1000 mm width
- Brushless motor and drive boards, speed up to 70 m/min
- Working temperature: from 0°C to +40°C
- Power supply: 230 Vac (Hz 50/60)
- Maximum power: 0.75 kW
- Structure and carpentry in aluminum and steel
- Height of belt from the ground: 850 +/- 50 mm
- Machine management via PLC
- Mechanical adjustments of blades

POSSIBLE APPLICATIONS:

- Selection of output lines based on signals from checkweighers, metal detectors, barcode readers, vision systems
- Balancing of the production flow on the downstream machines
- Connection between production machines of different capacities

DV12 / DV16

PRODUCT DESCRIPTION

Mechanical diverter with plates for changing product direction. Direction selection based on the signal.



MAIN FEATURES

- Diverter/Aligner 1/2
- AC motor controlled by inverter, speed up to 50 m/min
- Working temperature: from 0°C to +40°C
- Power supply: 230 Vac (Hz 50/60)
- Maximum power: 1.50 kW
- Structure and carpentry in aluminum and steel
- Height of belt from the ground: 850 +/- 50 mm
- Machine management via PLC

POSSIBLE APPLICATIONS:

- Selection of output lines based on signals from checkweighers, metal detectors, barcode readers, vision systems
- Balancing of the production flow on the downstream machines
- Connection between production machines of different capacities

DX 950

PRODUCT DESCRIPTION

Motorized roller diverter for product direction change. Possibility to divert the products at 90° and/or 180°, direction selection based on the signal.



MAIN FEATURES

- Cadences up to 75 ppm
- Motorized rollers, double transport, reverse directions
- Brushless motor and drive cards, speed up to 60 m/min
- Three Brushless motorized guides with pneumatic lifting
- Reverse on two exits
- Working temperature: from 0°C to +40°C
- Power supply: 230 Vac (Hz 50/60)
- Maximum power: 3.2 kW
- Structure and carpentry in aluminum and stainless steel
- Height of belt from the ground: 850 +/- 50 mm
- Machine management via PLC

POSSIBLE APPLICATIONS:

- Selection of output lines based on signals from checkweighers, metal detectors, barcode readers, vision systems
- Balancing of the production flow on the downstream machines
- Connection between production machines (packaging machines, fillers, conveyor belts) of different capacities

RTX 110

PRODUCT DESCRIPTION

Electronic rotator for 90° product rotation.



MAIN FEATURES

- Cadences up to 85 ppm
- Four 90° blades for product positioning
- Brushless motorized blades drive board with programmable degrees
- 1 motorized closed loop belt
- Brushless motor and drive cards, speed up to 60 m/min
- Working temperature: from 0°C to +40°C
- Power supply: 230 Vac (Hz 50/60)
- Maximum power: 300 W
- Structure and carpentry in aluminum and stainless steel
- Height of belt from the ground: 850 +/- 50 mm
- Machine management via PLC



The background is a dark blue, abstract representation of a circuit board. It features glowing blue lines that trace paths across the surface, resembling electronic traces. In the upper right, there are several horizontal bars with small triangles pointing to them, and a vertical column of binary digits (01, 02, 03, 04, 05, 06). The overall aesthetic is high-tech and digital.

SOFTWARE

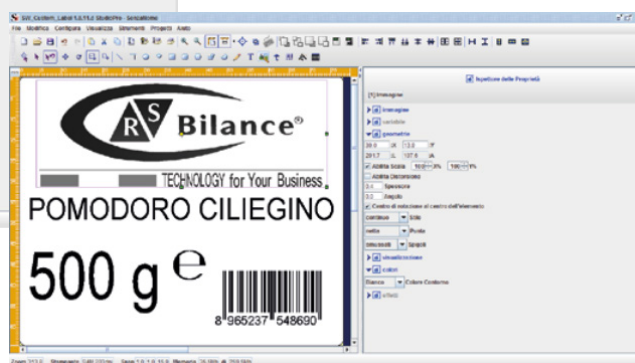
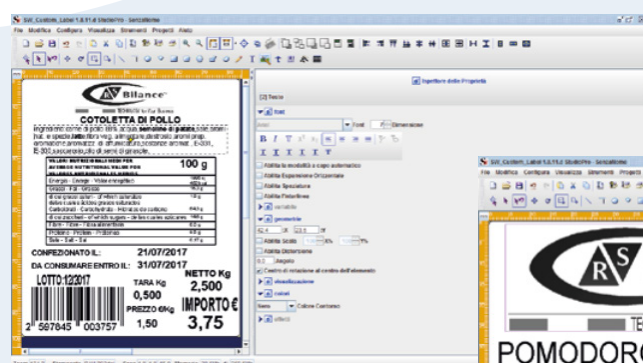
- Management of operator data, production batch, pause times
- Production report by device/date/serial number/surname/name/working minutes/hours/total/labels/% of total/% of average/% of label minutes/total weight/pieces within threshold/pieces outside threshold
- Histogram graph creation
- Exporting data to Excel files (.csv)
- Customizable report

SW CUSTOM LABEL

PRODUCT DESCRIPTION

Label editing software

SW custom label is a program for printing and editing labels. It is possible to create labels with great simplicity and without neglecting the graphic aspect.



MAIN FEATURES

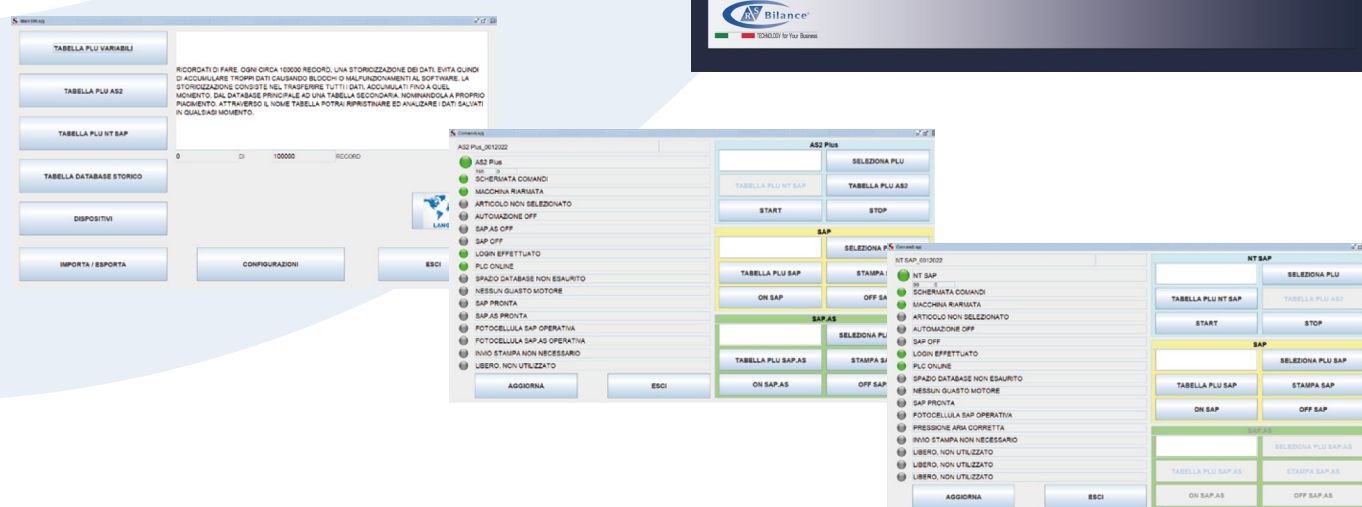
- Fonts of any type, lines, curves, arrows of all thicknesses and sizes, geometric figures, images and generic texts
- Label format rotation: 0, 90, 180, 270
- Field rotation
- Support for all barcodes
- Automatic synchronization of labels with connected machines

- N°10 machines that can be connected to RS SERVER of the same model and can be selected individually
- Creation, modification and deletion of the personal data (PLU), customer and traceability database belonging to the same type of machines
- Backup of all weighings carried out on the machines connected to it, storing in a single database the information necessary to identify the machine and the measurement carried out
- RS Balance standard communication protocol

LABEL SERVER

PRODUCT DESCRIPTION

Software for remote management of the main functions of the machines



MAIN FEATURES

- Management of PLU table with product settings (code, description, speed, delays, etc. ..);
- Variable table management with the information to be printed (code, description, label and associated variable information)
- Receives and groups the information to be saved of the labels printed by all the machines connected to it
- RS Balance standard file sharing system
- Standard RS Balance communication protocol (remote commands for PLU selection, Variable selection, machine start and stop, printers on and off, machine status request, etc.)
- Connectable to AS2 Plus and NT SAP labeling machines



R.S. Bilance S.r.l.
commerciale@rsbilance.com
www.rsbilance.com
Via Rinaudo 19 - 95032 - Belpasso CT
+39 095 3523283
Via Mascagni 12 - 20122 - Lainate MI
+39 0264137744



 TECHNOLOGY for Your Business